

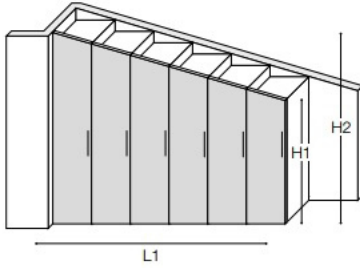
CUSTOM WARDROBE SOLUTIONS

DOOR INCLINED CUT

Only possible with LISCIA door

N.B. : add the cuts in module height, divider and sides if necessary (see reductions in height)

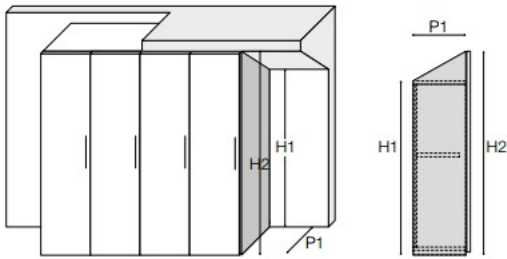
Always indicate the dimensions H1 - H2 - L1



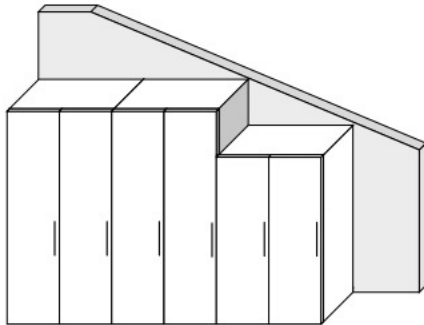
SIDE INCLINED CUT

N.B. : add the cuts in module height, divider and sides if necessary (see reductions in height)

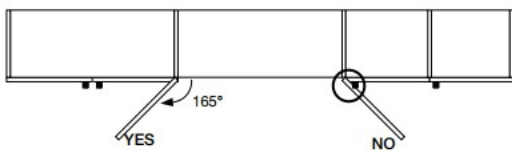
Always indicate the dimensions H1 - H2 - P1



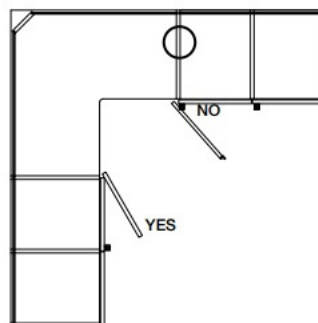
HEIGHT CHANGE COMPENSATION SIDE TH.14 WITH FRONT TH.25-1"



SURCHARGE 165° FOR DOOR TH.25-1"



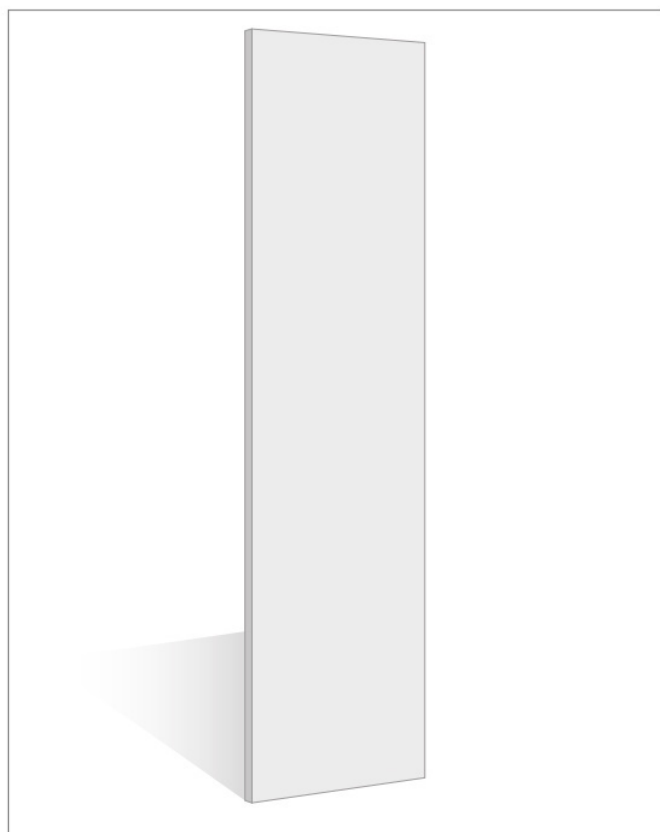
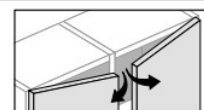
N.B.: in the compartments adjacent to the doors with hinges at 165° degrees, doors with the opposite opening must be used.



hinges 165°

Price
37

LISCIA_HINGED DOOR

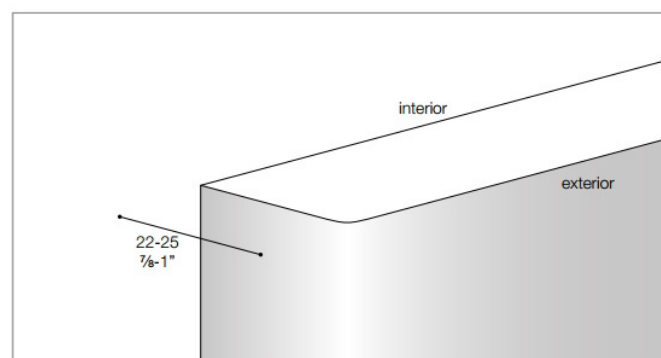


TECHNICAL SPECIFICATIONS

The Liscia hinged door consists of:

- a 22mm-7/8" thick MDF panel with low formaldehyde content for the lacquered or ecomalta® version.
- a 25mm-1" thick low formaldehyde wood particle panel for the veneered version.

SECTION



FRONTS

- matt lacquered
- ecomalta®
- wood

HANDLES

	HINGE
Concealed handle	•
Lipsi	•
Filo	•
Sagitta	•
Kono	•

For costs or additional handles, see page 36

DOOR SIZES

	H. 2384-937/8"	H. 2544-1001/2"	H. 2896-114"
W. 450-173/4"	•	•	•
W. 500-193/8"	•	•	•
W. 600-233/8"	•	•	•



- = AVAILABLE
- = NOT AVAILABLE

CUSTOM REDUCTIONS ON PAGE 183



Lipsi	Surcharge	★ Price Sale price
W.130-5 $\frac{1}{8}$ " centre distance 96-3 $\frac{3}{4}$ " vertical assembly on edge Finishes - Satin burnished	standard price	20



Kono	Surcharge	★ Price Sale price
diam. 50-2" only applicable on hinged doors. Finishes - Satin burnished	standard	20



Filo	Surcharge	★ Price Sale price
W.1120-44 $\frac{1}{8}$ " centre distance 160-6 $\frac{1}{4}$ " or 352-13 $\frac{7}{8}$ " vertical assembly Finishes - Matt lacquered	52	70

HANDLES FOR LISCIA DOOR

* = The price indicated refers to the request for additional handles

HANDLES FOR LISCIA DOOR.

The handles for the Liscia door are in a burnished finish and are supplied as standard or with a surcharge depending on the model.

In the pair of doors, the handle is always in the RIGHT door, on request it can also be inserted in the Left door with a surcharge.

The LIPSI handle cannot be fitted in the corner elements

The concealed handle can be fitted frontally on the hinged doors while on the sliding doors it is positioned on the side profile.



Concealed handle W.20-3/4" H.803 1/8" front assembly for hinged door assembly on the edge for sliding Finishes - Burnished	Surcharge	* Price Sale price
	standard price	20

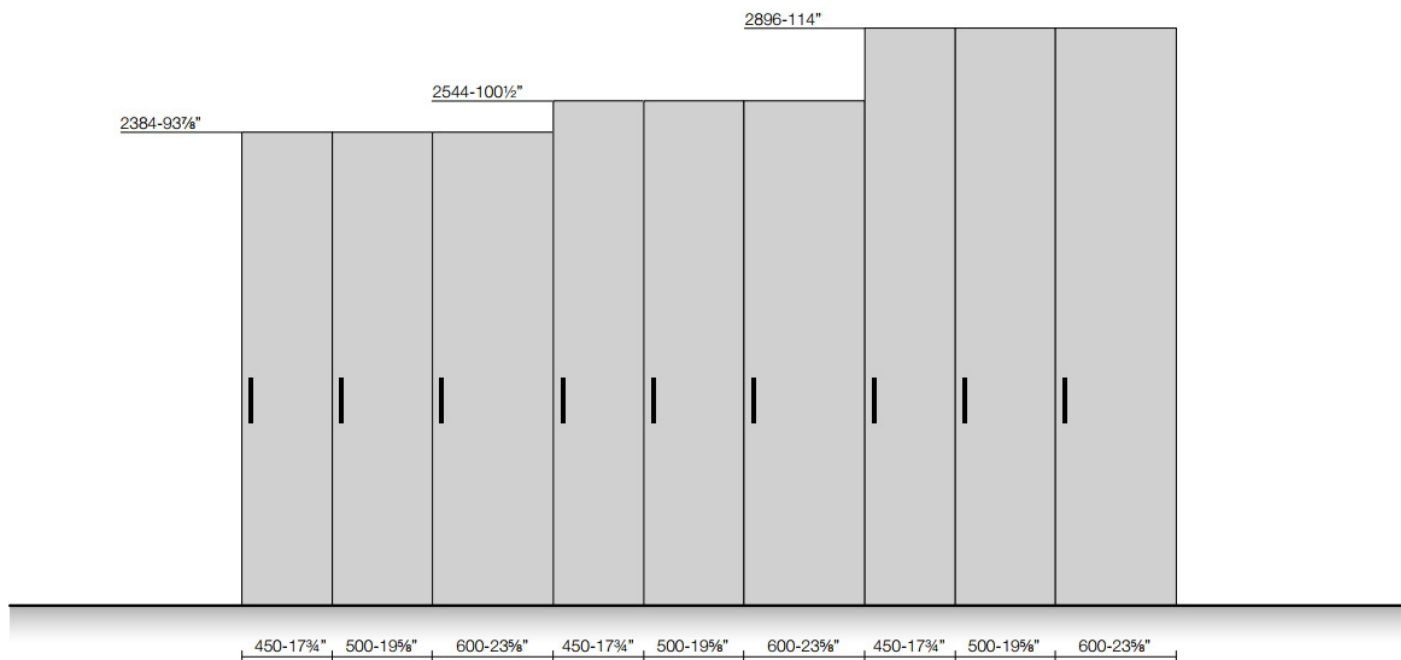


Sagitta W. 224-8 7/8" centre distance 192-7 1/2" vertical only applicable on hinged doors. Finishes - Satin burnished	Surcharge	* Price Sale price
	24	44

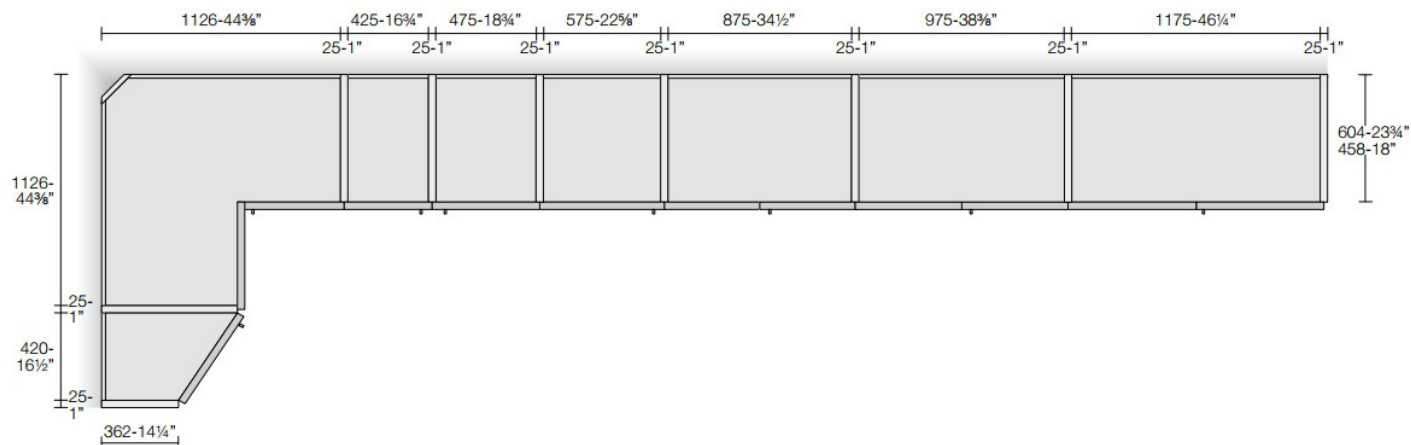
HINGED DOOR WARDROBE

DIMENSIONAL CHARACTERISTICS

HEIGHT



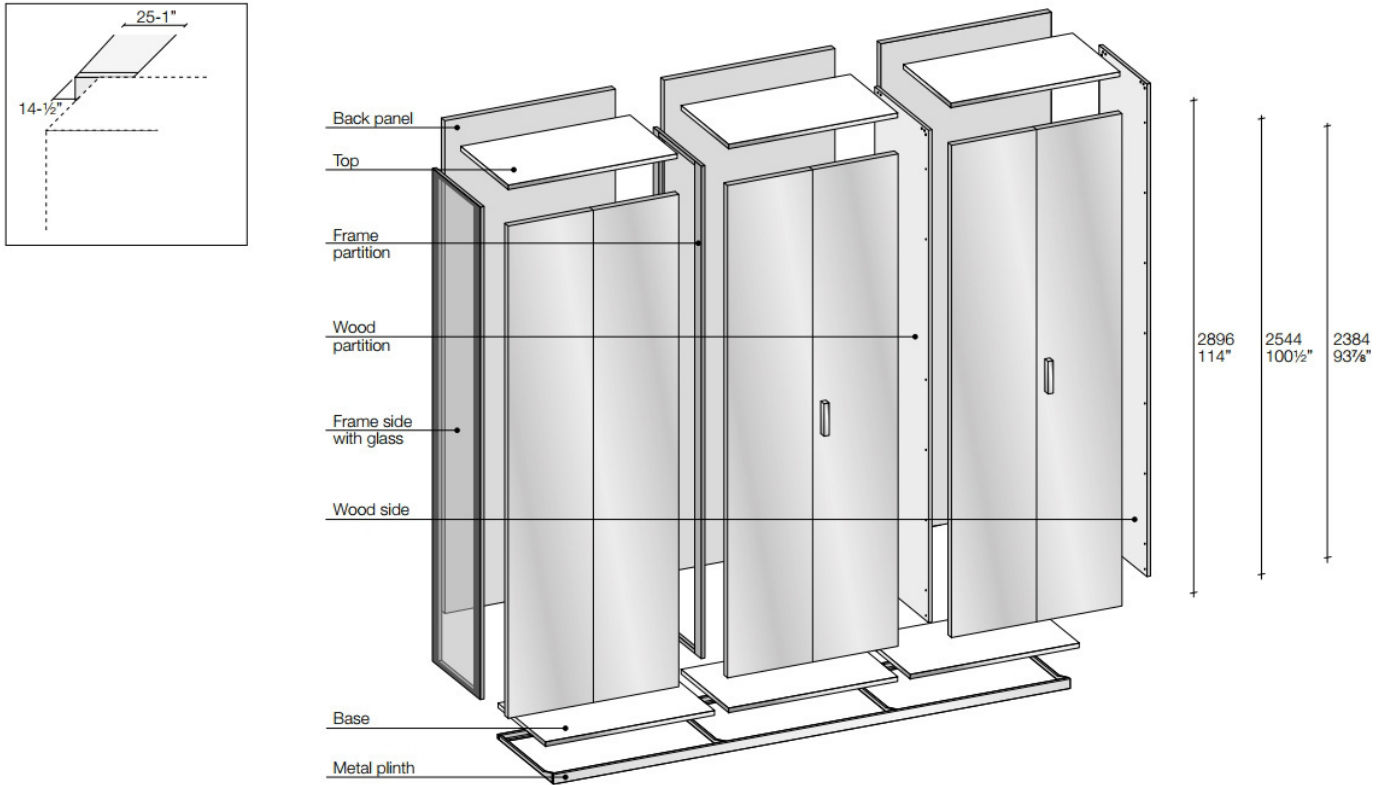
STRUCTURE WIDTH AND DEPTH (EXCLUDING DOOR)



- All wardrobes are supplied with a base made of metal profiles and adjustable feet that ensure, besides quick assembly, excellent and durable stability as well as perfect door closure. The framework is supplied in a single piece the same length as the wardrobe up to a maximum length of 4.975 mm.
- The removable bottom panel allows easy cleaning and can be used as a secret compartment; it is not available in compartments with drawer packs, interior partitions and in wardrobes with coplanar sliding doors.
- **The price of the modules always includes a structural shelf and two standard clothes hanger rails.**
- **The price of the module with side depth reduced to 458-18" mm, is equal to the price of the module with standard depth.**
- **The price of the modules also includes the plinth.**

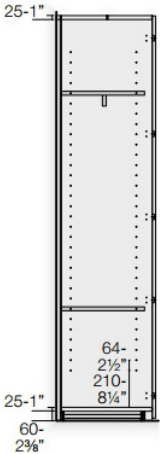
HINGED DOOR WARDROBE

SIDE



Constant holes at 64-2½" mm pitch (standard)

Holes only on the shelves. The positioning of the shelves will always follow the reference hole at a pitch of 64-2½" mm (on request)



The holes only on the shelves will be supplied on request and at the same price and a drawing with the necessary dimensions must be provided by you, always following the reference holes at a pitch of 64-2½" mm.

ASSEMBLY CHARACTERISTICS

To assemble the wardrobe, a space of 30-1⅞" mm in width is required for all the opening systems.

A space of 25-1" mm in height is required to assemble the hinged wardrobe.

To assemble the sliding and coplanar wardrobe, this height space is required:

+ 40mm / 1⅝"
for assembly of the doors

+ 70mm / 2¾"
for easy adjustment

Space occupied by the mechanisms of the sliding and coplanar wardrobe in height for the external assembly and subsequent insertion in the recess:

+ 30mm / 1⅞"

our wardrobes
have been
made to rest
on three solid
foundational ideas:

stability
adjustability
reliability



The aluminium base not only allows quick and simple assembly, but also facilitates any disassembly operations for any time you might move house.

WARDROBES PROGRAM PRESENTATION



Adjustment and levelling foot with a capacity of 100-3 $\frac{3}{8}$ " kg. The adjustment is transmitted along the entire length of the frame in order to avoid imbalances typical of traditional wardrobes with wooden base. The possible adjustment is from 0 to 12mm- $\frac{1}{2}$ "1.

The entire wardrobe distributes the weight uniformly on the structure, ensuring stability over time.



The aluminium profile has a section with differentiated sealing and reinforced points absorb the various pressures of the system.



The removable base allows facilitates cleaning and can also be used as a secret compartment.

GLAMOUR	ELEGANCE	NATURAL
 Bianco giglio	 Bianco neve	 Alloro
 Corda	 Grigio agata	 Verde quarzo
 Tortora	 Grigio polvere	 Verde salvia
 Beige fango	 Grigio nebbia	 Verde timo
 Beige argilla	 Grigio tasmania	
 Marrone corteccia	 Grigio Londra	
 Beige gypso	 Anthracite Gray	
 Grisbeige	 Nero frac	
 Comfort		
 Grigio creta		
 Titanio		

HARMONY	ROMANTIC	ENERGY
 Celeste	 Rosa pompelmo	 Giallo bambù
 Blu pastello	 Rosa malva	 Arancio cotto
 Blu fiordaliso	 Fard	 Rosso corallo
 Blu oltremare	 Rosa litchi	 Rosso burgundy
 Blu abisso	 Rosso vermut	 Viola melanzana
		 Verde spiga
		 Verde oliva

CONFORMITY TO SAMPLE

Conformity to the sample should not be understood in an absolute sense since there are margins of tolerance due to product variations (colors, materials, sizes) or caused by environmental factors (light, humidity, etc.). In case of completion of the order at a later time, perfect equality of colors and/or coatings between the original composition and the additional elements is not guaranteed.

N.B.: reproduction of colors on paper may show slight color differences from the originals.

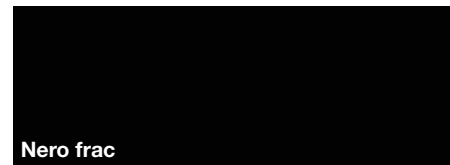
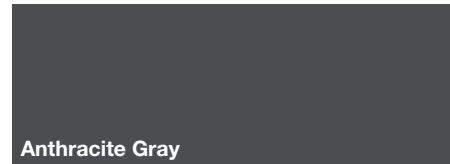
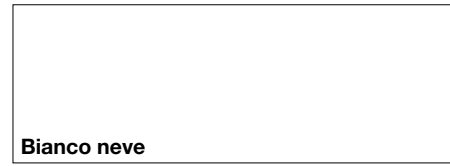
FINISHES

Vetro satinato o lucido retrolaccato
Satin-finished or polished back-lacquered glass

GLAMOUR

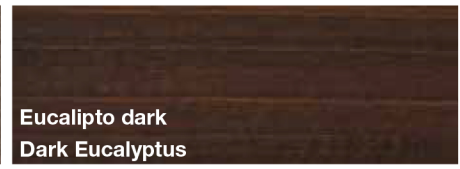
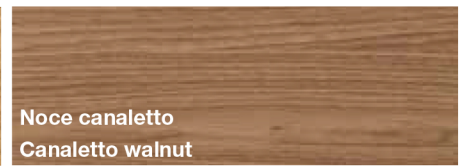


ELEGANCE



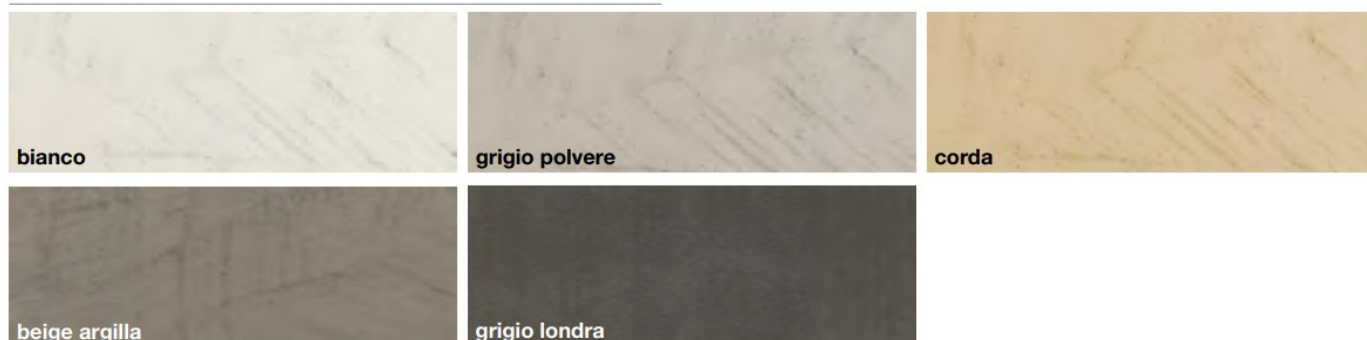
FINISHES

WOOD VENEERS



FINISHES

ECOMALTA®



CONFORMITY TO SAMPLE

Conformity to sample cannot be considered as absolute since there are tolerance margins due to product variations (colours, materials, sizes) or caused by environmental factors (light, humidity, etc.).

If orders are completed at different moments in time we cannot guarantee the exact likeness of colours and/or finishes between the first original layout and the additional elements.

N.B.: The reproduction of colours on paper may differ slightly from the original ones.