

Rotor

Luciano Bertoncini, 2002/2009



Occasional table

Cinque superfici sovrapposte. Il piano superiore e quello inferiore sono fissi, mentre i tre centrali possono ruotare a 360° creando infinite geometrie e moltiplicando il piano d'appoggio.

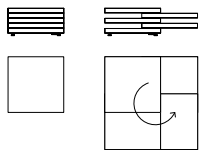
Five overlapping surfaces. The upper and the lower top are fixed, whereas the three middle tops can rotate 360°, providing various regular or irregular shapes and increasing the surface area.

Fünf übereinanderliegende Flächen. Die obere und die untere Platte sind fix, die drei mittleren Platten können hingegen um 360° gedreht werden, wodurch unzählige Geometrien entstehen und die Ablagefläche vergrößert wird.

Cinq plateaux superposés. Les plateaux supérieur et inférieur sont fixes alors que les trois plateaux centraux peuvent tourner à 360° en créant une infinité de formes et en multipliant les plans de dépose.

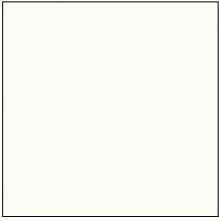
KRISTALIA

Dimensions

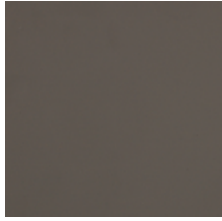


L 63/105 P 63/105 H 31 cm
W 24^{5/8}/41^{3/8}" D 24^{5/8}/41^{3/8}" H 12^{2/8}"

Fenix-NTM® top



Kos white 0032



London grey 0718



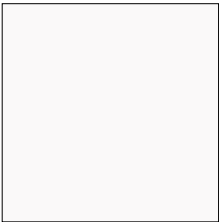
Ingo black 0720

Wood top



Walnut effect

Lacquered gloss top



White

More finishes and coverings info:

[Materials & Finishes](#)