

Oops

Monica Graffeo, 2006



Rectangular, round and oval table / Extensible version

Da tondo diventa ellissoidale. Ineccepibile dal punto di vista tecnico, sia chiuso sia aperto, per l'estetica e la solidità.

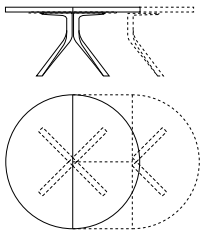
The round shape becomes ellipsoidal. In technical terms, it is impeccable when closed or open due to its aesthetic appeal and sturdiness.

Die runde Version erhält eine Ellipsenform. Ein in Sachen Ästhetik und Stärke sowohl im geschlossenen als auch im offenen Zustand technisch einwandfreier Tisch.

Le plateau rond devient ellipsoïdal. Parfaite du point de vue technique, tant ouverte que fermée, de par son esthétique et sa solidité.

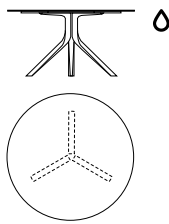
KRISTALIA

Dimensions



Extendible
L 125/180 P 125 H 76 cm
W 49²/₈/70⁷/₈" D 49²/₈" H 29⁷/₈"

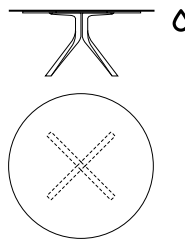
L 140/200 P 140 H 76 cm
W 55¹/₈/78⁶/₈" D 55¹/₈" H 29⁷/₈"



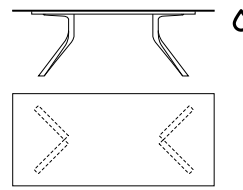
Fixed - Round top (3 legs)
Ø 120 H 77 cm
W 47²/₈" H 30³/₈"

Ø 140 H 77 cm
W 55¹/₈" H 30³/₈"

Ø 159 H 75 cm
W 62⁵/₈" H 29⁴/₈"



Fixed - Round top (4 legs)
Ø 160 H 77 cm
W 63" H 30³/₈"



Fixed - Rectangular top
L 220 P 100 H 77 cm
W 86⁵/₈" D 39³/₈" H 30³/₈"

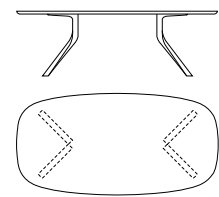
L 250 P 100 H 75 cm
W 98³/₈" D 39³/₈" H 30³/₈"

L 280 P 100 H 75 cm
W 110²/₈" D 39³/₈" H 30³/₈"

L 220 P 110 H 75 cm
W 86⁵/₈" D 43²/₈" H 29⁴/₈"

L 250 P 110 H 75 cm
W 98³/₈" D 43²/₈" H 29⁴/₈"

L 280 P 110 H 75 cm
W 110²/₈" D 43²/₈" H 29⁴/₈"



Fixed - Oval top
L 220 P 110 H 75 cm
W 86⁵/₈" D 43²/₈" H 29⁴/₈"

L 250 P 110 H 75 cm
W 98³/₈" D 43²/₈" H 29⁴/₈"

L 280 P 110 H 75 cm
W 110²/₈" D 43²/₈" H 29⁴/₈"

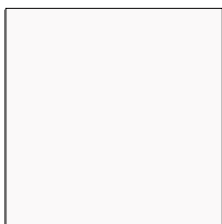
Accessories

- Cable ducting hole
- Lazy Susan swivel tray
- Casper protective cover

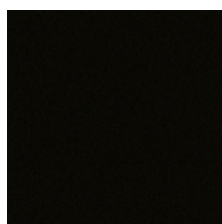
Aluminium legs (indoor)



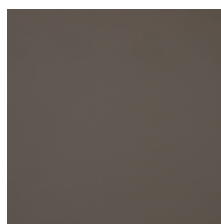
Brushed metal



White metal



Black metal

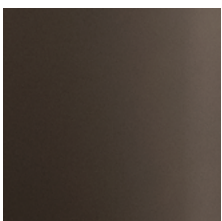


London grey metal

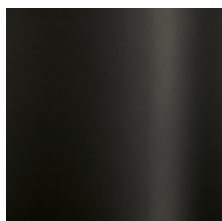
Aluminium legs Exclusive (indoor)



Exclusive Champagne



Exclusive Brown

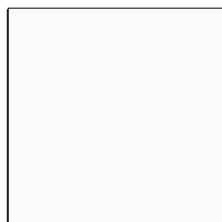


Exclusive Onyx Black

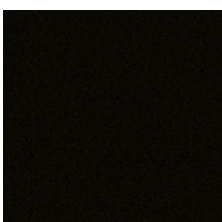


Exclusive Space Gray

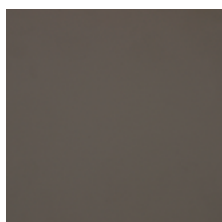
Aluminium legs (indoor/outdoor)



White metal

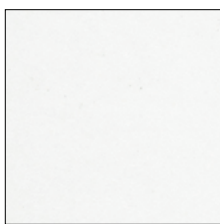


Black metal



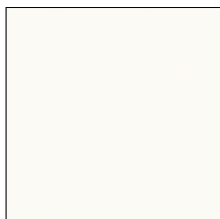
London grey metal

Pure-white laminate top (indoor/outdoor)

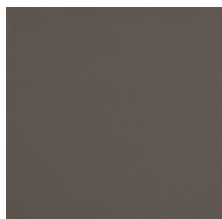


White

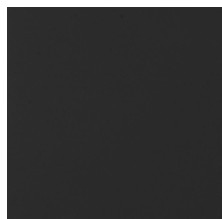
Fenix-NTM® top (indoor/outdoor)



Kos white 0032

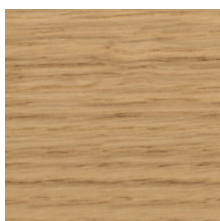


London grey 0718

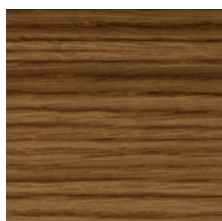


Ingo black 0720

Wood top (indoor)



European oak effect

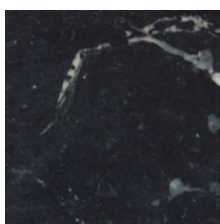


Walnut stained oak effect

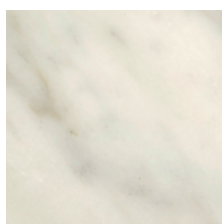


Black oak effect

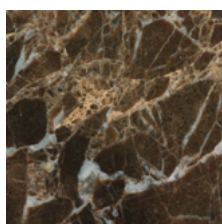
Marble top (indoor)



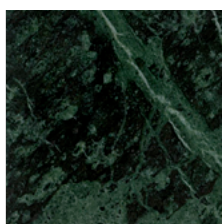
Marquinia Black



Carrara's White



Dark Emperador



Green Alps



Calacatta

More finishes and coverings info:

[Materials & Finishes](#)