



## Square and rectangular table

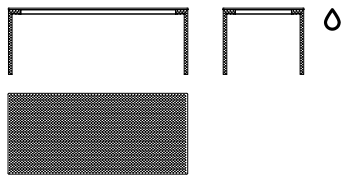
Tecniche artigianali e industrial design contemporaneo. L'armatura interna in acciaio delle gambe assicura solidità e stabilità.

Craftsmanship and contemporary industrial design. The steel internal reinforcement of the legs ensures sturdiness and stability.

Handwerkliche Techniken und zeitgenössisches Industriedesign. Die Innenstruktur der Beine aus Stahl gewährleistet Stärke und Stabilität.

Techniques artisanales et design industriel contemporain. L'âme en acier à l'intérieur des pieds assure à cette table, solidité et stabilité.

## Dimensions



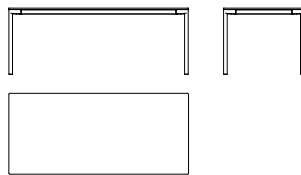
## Cement version

L 200 P 90 H 74 cm  
W 78<sup>5/8</sup>" D 35<sup>1/8</sup>" H 29<sup>1/8</sup>"

L 240 P 100 H 74 cm  
W 94<sup>1/8</sup>" D 39<sup>3/8</sup>" H 29<sup>1/8</sup>"

L 280 P 100 H 74 cm  
W 110<sup>2/8</sup>" D 39<sup>3/8</sup>" H 29<sup>1/8</sup>"

L 140 P 140 H 74 cm  
W 55<sup>1/8</sup>" D 55<sup>1/8</sup>" H 29<sup>1/8</sup>"



## Wood version

L 200 P 90 H 73 cm  
W 78<sup>5/8</sup>" D 35<sup>1/8</sup>" H 28<sup>5/8</sup>"

L 240 P 100 H 73 cm  
W 94<sup>1/8</sup>" D 39<sup>3/8</sup>" H 28<sup>5/8</sup>"

L 280 P 110 H 73 cm  
W 110<sup>2/8</sup>" D 43<sup>2/8</sup>" H 28<sup>5/8</sup>"


L 140 P 140 H 73 cm  
W 55<sup>1/8</sup>" D 55<sup>1/8</sup>" H 28<sup>5/8</sup>"

## Accessories

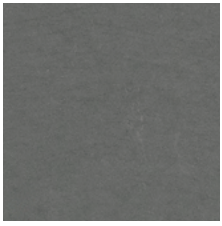
Cable ducting hole

Cable ducting

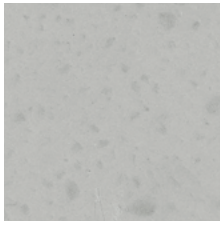
Casper protective cover

 = indoor and outdoor

Cement legs (indoor/outdoor)



Dark grey



Light grey

Wood legs (indoor)



European oak effect

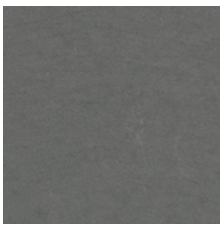


Walnut effect

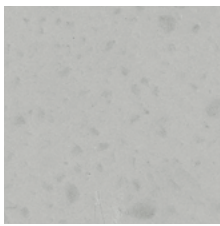


Black oak effect

Cement top (indoor/outdoor)

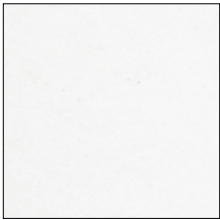


Dark grey



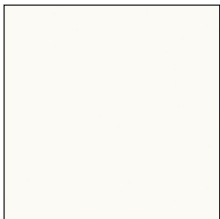
Light grey

Pure-white laminate top (indoor)

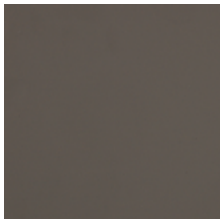


White

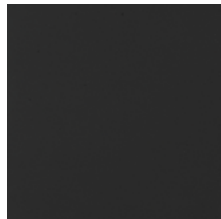
Fenix-NTM® top (indoor)



Kos white 0032



London grey 0718



Ingo black 0720

More finishes and coverings info:

[Materials & Finishes](#)