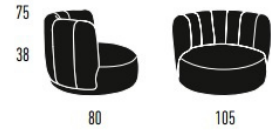


GAIA DIVANO BIG LOUNGE

NEW

Swiveling,
set (easy chair including ottoman)
Design Monica Armani

EASY CHAIR
(7 BACKREST ELEMENTS)



Upholstery

Art. 13300-SEB

seat Backrest fabric C.O.M. Backrest fabric PG 1 Backrest fabric PG 2 Backrest fabric PG 3 Backrest fabric ROHI

Fabric C.O.M.

Fabric	PG 1
	PG 2
	PG 3
	ROHI

Extras Optionally with plastic or felt glides - please specify when ordering.

Service + Info The GAIA DIVANO BIG LOUNGE armchair is always supplied as a set with the GAIA DIVANO BIG LOUNGE ottoman. Armchair prices are set prices including ottoman. The ottoman is always upholstered in the same material as the seat of the armchair. Alternatively, the armchair can also be configured without the swivel function at the same price. Please specify when ordering.

set (easy chair including ottoman)

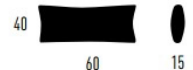
OTTOMAN



Art. 13300-OTB

Extras Only with plastic legs. Castors (1 set of 4 castors) optional at an extra charge. Please enquire.

LOOSE ADDITIONAL
BACK SUPPORT CUSHION



Upholstery

Art. 13300-ZLZ

Fabric/leather C.O.M.

Fabric	PG 1
	PG 2
	PG 3
	ROHI

STOFFKOLLEKTION

FABRIC COLLECTION



Individuelle und hochwertig gefertigte Gewebe überzeugen durch ihre besondere Struktur und Haptik. Sie beleben das Interieur durch frische Farben und aufregende Muster oder beruhigen den Raum durch ihre Schlichtheit und Eleganz. Das Möbel bekommt durch den persönlich ausgewählten Bezugsstoff seinen ganz individuellen Look.

Individual and high-quality manufactured fabrics convince by their special structure and feel. They enliven the interior with fresh colours and exciting patterns or calm the room with their simplicity and elegance. The furniture gets its very individual look through the personally selected upholstery fabric.

ASCOT

PG 3

Bouclé Zweitön-Gewebe

Bouclé two tone woven



855 g/rm



145 cm



80.000 Martindale



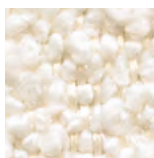
95% Polyester, 5% Acrylic



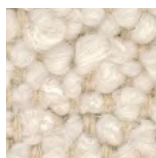
BS 5852 Part I Cigarette Test - PASS

EN 1021-1 Cigarette Test - PASS

CA. Tech. Bull. 117:2013 / NFPA 260 Cigarette Test - PASS



nata 2400



pearl 2401



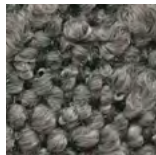
toffee 2402



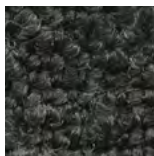
brick 2404



mouse 2405



graphite 2406



black 2407



atlantic 2408



taupe 2403

PICASSO

PG 3

Zweitön-Flachgewebe (dick)

Two tone woven (thick)



495 g/rm



140 cm



> 35.000 Martindale



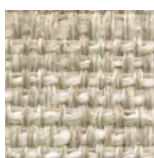
59% Polyester, 41% Acetate



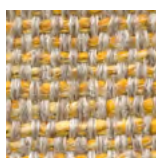
BS 5852 Part I Cigarette Test - PASS

EN 1021-1 Cigarette Test - PASS

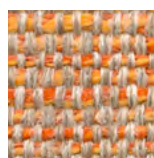
CA. Tech. Bull. 117 / NFPA 260 Cigarette Test - PASS



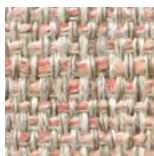
cream 5350



yellow 5351



orange 5352



pink 5353



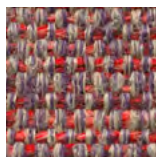
anthracite 5354



sand 5356



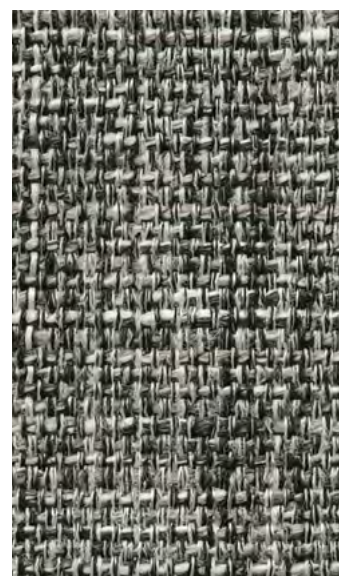
mouse 5357



red 5358



aubergine 5359



grey 5355



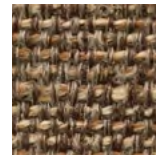
taupe 5360



camel 5361



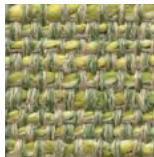
tabac 5362



gold 5363



ebony 5364



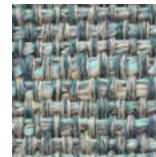
lima 5365



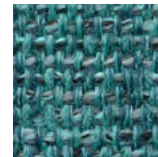
water green 5366



skyfall 5367



safari 5368



turquoise 5369

Bitte beachten Sie, dass die Farben im Original je nach Lichteinfall und Alter des Druckmediums abweichen können!

Please note that the colours in the original may vary depending on the incidence of light and the age of the printing medium!

LISBOA

PG 1

Cord Samtstoff

Ribcord velvet



455 g/rm



140 cm



45.000 Martindale



100 % Polyester

Bitte beachten Sie, dass die Farben im Original je nach Lichteinfall und Alter des Druckmediums abweichen können!

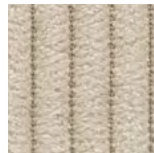
Please note that the colours in the original may vary depending on the incidence of light and the age of the printing medium!



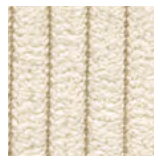
Col.: 1



Col.: 2



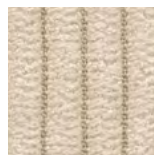
Col.: 3



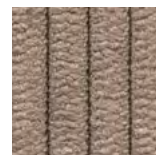
Col.: 5



Col.: 32



Col.: 6



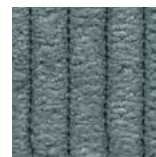
Col.: 7



Col.: 11



Col.: 12



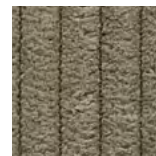
Col.: 15



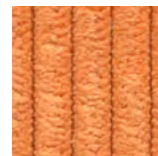
Col.: 18



Col.: 20



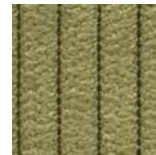
Col.: 21



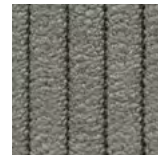
Col.: 22



Col.: 23



Col.: 24



Col.: 25



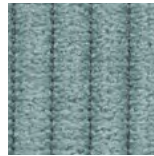
Col.: 26



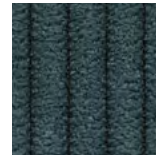
Col.: 27



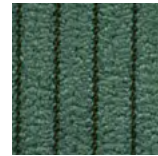
Col.: 28



Col.: 29



Col.:30



Col.: 31

SEVEN

PG 1

Gestrickter Samt

Knitted velvet



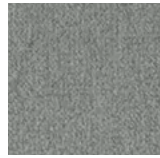
onyx 169



anthrazit 67



grey 65



dolphin 180



steel 149



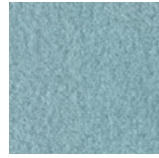
blossom 166



lilac 70



denim 153



sky 142



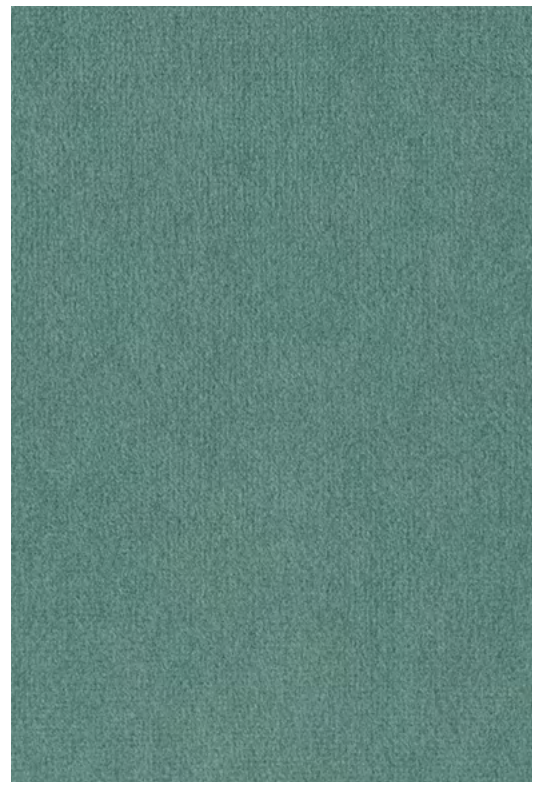
mint 50



ivory 101



beige 5



eucalyptus 193



capuccino 11



shitake 124



liver 10



espresso 123



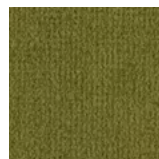
darkbrown 18



cinnamon 94



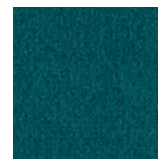
ocre 23



moss 59



turquoise 44



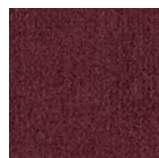
petrol 56



navy 49



nightshade 178



winered 39



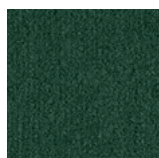
scarlet 141



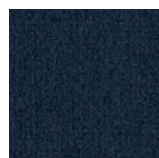
saffron 183



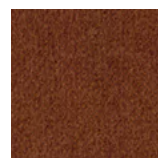
plumb 168



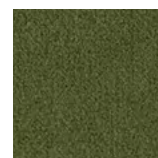
forest 162



darkblue 48



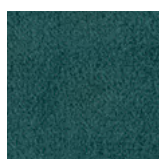
copper 126



turtle 88



hunter 156



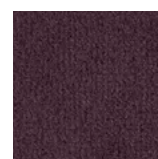
emerald 184



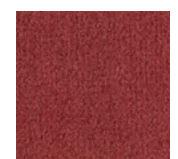
niagara 158



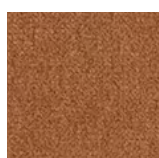
lavender 71



blackberry 177



camire 36



cognac 28



teal 198



magnolia 160



blue 45



honey 202



420 g/rm



138 cm



> 100.000 Martindale



95% Polyester



BS 5852 (1979) Cigarette Test - PASS

Bitte beachten Sie, dass die Farben im Original je nach Lichteinfall und Alter des Druckmediums abweichen können!

Please note that the colours in the original may vary depending on the incidence of light and the age of the printing medium!

BOSTON

PG 2

Uni Chenille-artig (Kette Richtung)

Chenille like (warp direction, plain woven)



610 g/rm



142 cm



80.000 Martindale



100 % Polyester



BS 5852 Part I Cigarette Test - PASS

EN 1021-1 Cigarette Test - PASS

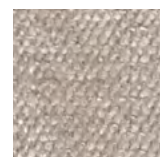
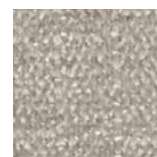
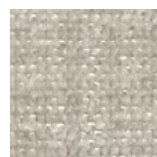
CA. Tech. Bull. 117 / NFPA 260 Cigarette Test - PASS

Bitte beachten Sie, dass die Farben im Original je nach Lichteinfall und Alter des Druckmediums abweichen können!

Please note that the colours in the original may vary depending on the incidence of light and the age of the printing medium!



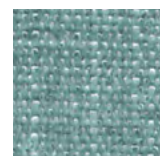
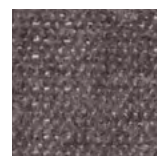
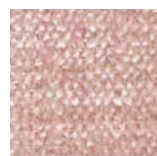
ash 5319



toffee 5310

cement 5311

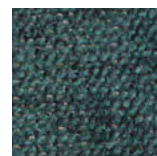
trufa 5312



pink 5313

lavanda 5314

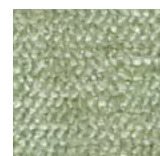
sky 5315



turquoise 5316

ocean 5317

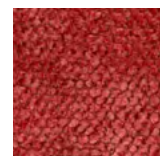
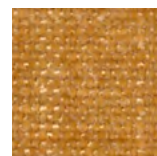
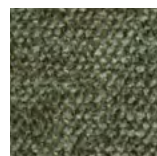
black 5318



light grey 5320

water green 5321

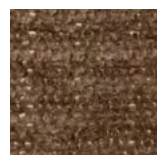
green 5322



forest 5323

mostaza 5324

red 5325



brown 5326

chocolate 5327

mouse 5328

DANUBIO

PG 2

Uni Flachgewebe

Plain woven



650 g/rm



142 cm



40.000 Martindale



90 % Polyester, 10% Rayon



BS 5852 Part I Cigarette Test - PASS

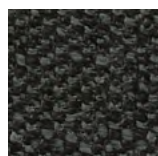
EN 1021-1 Cigarette Test - PASS

CA. Tech. Bull. 117:2013 / NFPA 260 Cigarette Test - PASS

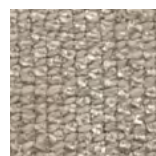
Bitte beachten Sie, dass die Farben im Original je nach Lichteinfall und Alter des Druckmediums abweichen können!

Please note that the colours in the original may vary depending on the incidence of light and the age of the printing medium!

atlantic 1178



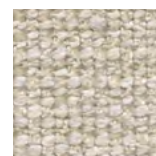
black 1180



trufa 1160



light grey 1161



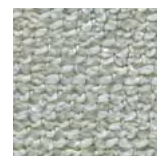
toffee 1162



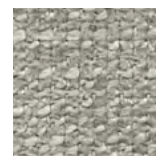
cream 1163



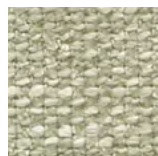
pure white 1164



light blue 1165



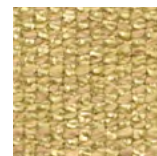
silver 1166



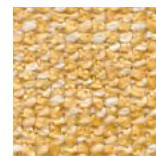
water green 1167



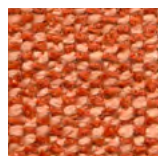
beige 1168



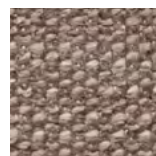
citric 1169



yellow 1170



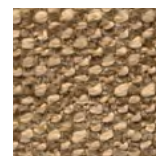
teja 1171



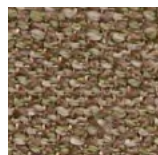
lavanda 1172



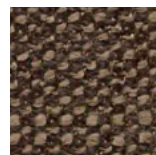
purple 1173



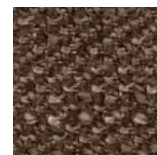
camel 1174



forest 1175



chocolate 1176



moka 1177



dark grey 1179