



# lakes

DESIGN  
STUDIO KLASS

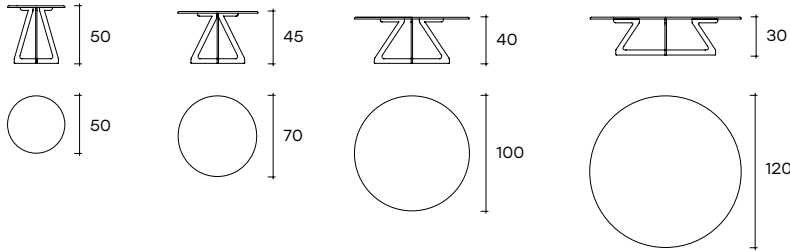
modello registrato  
registered model



portata sul piano: 30 kg  
load capacity on top: 30 kg

Tavolino con piano in vetro da 10 mm fuso a gran fuoco, retroverniciato con tinte metallizzate. Piano disponibile anche in marmo, spessore 20 mm. Base in metallo verniciato, finitura Grigio Lava o Champagne metallizzato.

Coffee table with 10 mm fused, back-lacquered glass top with metal paints. Top in also available in marble, 20 mm thick. Metal painted base available in Lava Grey or metallic Champagne finishes.



dimensioni L/Ø, P, H  
dimensions L/Ø, W, H  
(cm)

COD./CODE

Ø/L

P/W

H

peso netto  
net weight  
(kg)

peso lordo  
gross weight  
(kg)

volume imballo  
package volume  
(m<sup>3</sup>)

Tavolino tondo con piano in vetro fuso retroverniciato con tinte metallizzate Cat.2.  
Round coffee table with fused glass top, back-painted with metallic paints Cat.2.

LAK120...

120

30

38

55

0,35

LAK100...

100

40

29

42

0,28

LAK70...

70

45

18

26

0,16

LAK50...

50

50

12

19

0,11

Tavolino tondo con piano in marmo Cat.M1.  
Round coffee table with marble top Cat.M1.

LAK120...

120

30

70

87

0,35

LAK100...

100

40

50

63

0,28

LAK70...

70

45

28

36

0,16

LAK50...

50

50

17

24

0,11

Tavolino tondo con piano in marmo Cat.M2.  
Round coffee table with marble top Cat.M2.

LAK120...

120

30

70

87

0,35

LAK100...

100

40

50

63

0,28

LAK70...

70

45

28

36

0,16

LAK50...

50

50

17

24

0,11



BASE IN METALLO _ METAL BASE	
FINITURA _ FINISH	CODICE _ CODE
Grigio Lava <i>Lava Grey</i>	<b>GL/</b>
Champagne metallizzato <i>Metallic Champagne</i>	<b>CH/</b>

VETRO RETROVERNICIATO _ BACK PAINTED GLASS		
CAT. COLORE COLOR CAT.	COLORI COLORS	Vetro trasparente fuso <i>Fused transparent glass</i>
<b>CAT.2</b> Tinta metallizzata <i>Metallic color</i>	Grigio lava _ <i>Lava Grey</i>	<b>VF-LA</b>
	Marrone ramato _ <i>Copper Brown</i>	<b>VF-RA</b>
	Champagne _ <i>Champagne</i>	<b>VF-CH</b>
	Blu notte _ <i>Night Blue</i>	<b>VF-BL</b>
	Marrone brillante _ <i>Brilliant Brown</i>	<b>VF-MB</b>
	Nero brillante _ <i>Brilliant Black</i>	<b>VF-NB</b>

PIANO IN MARMO _ MARBLE TOP		
CAT. MARMO _ MARBLE CAT.	NOME _ NAME	CODICE FINITURA _ FINISH CODE
<b>CAT.M1</b>	Mystic Brown	<b>M1-MB</b>
	Grigio Carnico <i>Carnico Grey</i>	<b>M1-GC</b>
<b>CAT.M2</b>	Calacatta Royal	<b>M2-CR</b>
	Manhattan	<b>M2-MN</b>



---

**FINITURE**  
**FINISHES**

---

**Base in metallo**  
**Metal base**



grigio lava  
lava grey

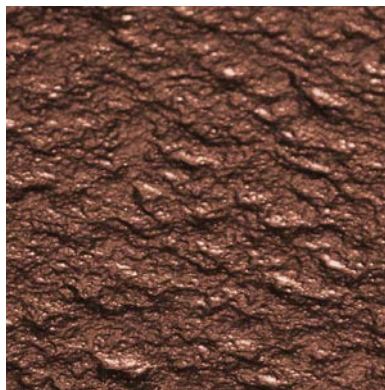


champagne metallizzato  
metallic champagne

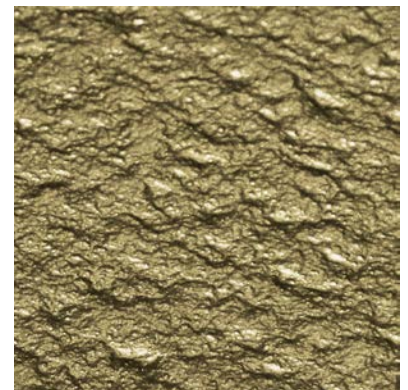
**Piano in vetro fuso retroverniciato**  
**Back-painted fused glass top**



grigio lava  
lava grey



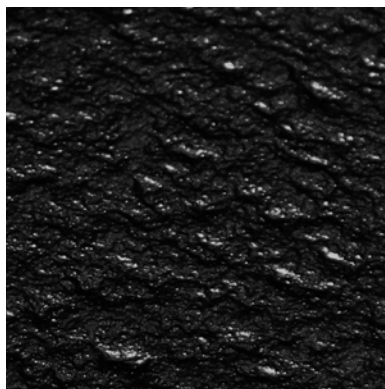
marrone ramato  
copper brown



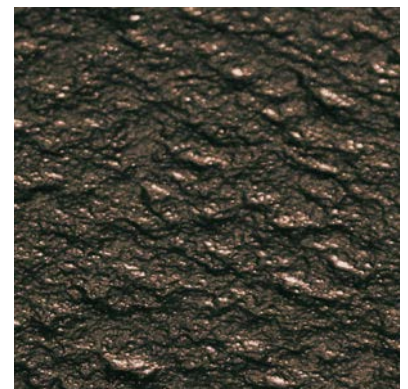
champagne  
champagne



blu notte  
night blue



nero brillante  
brilliant black



marrone brillante  
brilliant brown



---

**FINITURE  
FINISHES**

---

**Piani in marmo  
Marble top**



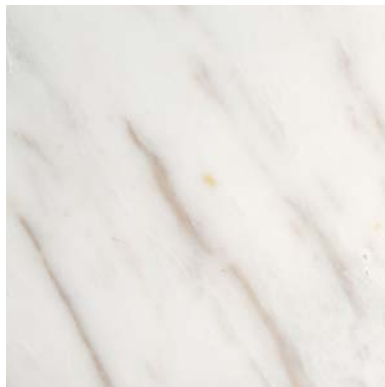
grigio carnico  
carnico grey



mystic brown  
mystic brown



manhattan  
manhattan



calacatta royal  
calacatta royal