



CARATTERISTICHE TECNICHE

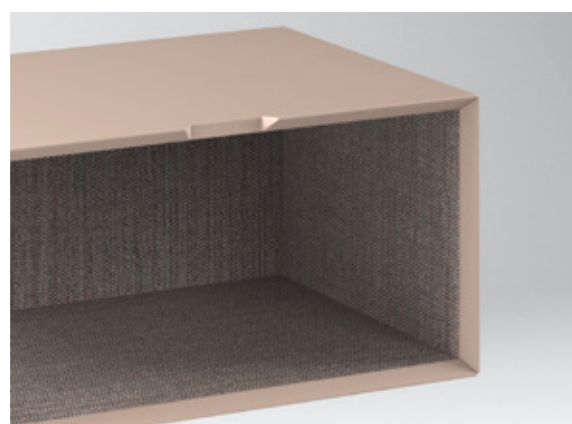
TECHNICAL FEATURES  
CARACTERISTIQUES TECHNIQUES  
CARACTERISTICA TECNICAS

# CUBE 6

## FINITURE

FINISHING / FINITIONS / ACABADOS

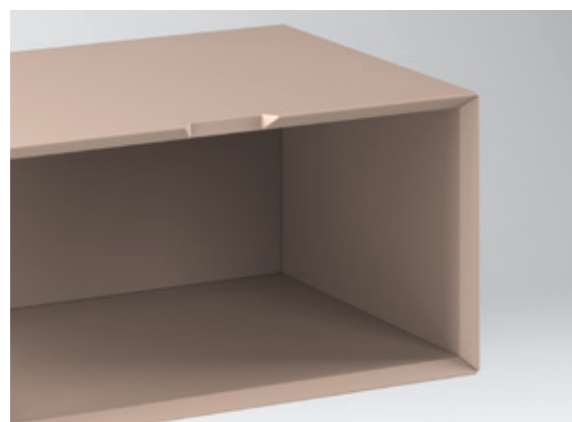
- IT**
- A. Interno: Alpha  
Esterno: Laccato opaco
  - B. Interno: Alpha  
Esterno: Laccato lucido
  - C. Interno: Laccato opaco  
Esterno: Laccato opaco
  - D. Interno: Laccato lucido  
Esterno: Laccato lucido
  - E. Interno: Rovere poro aperto  
Esterno: Rovere poro aperto
  - F. Interno: Rovere vissuto  
Esterno: Rovere vissuto
  - G. Interno: Laccato metallo  
Esterno: Laccato metallo
  - H. Interno: Rovere vissuto  
Esterno: Anta vetro



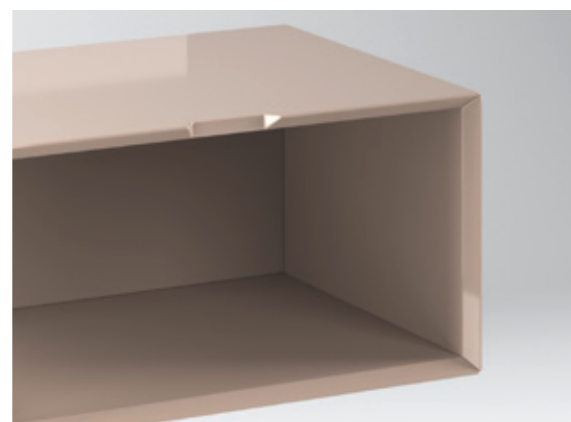
A



B



C



D



E



F



G



H

- EN**
- A. Internal: Alpha  
External: Mat lacquered
  - B. Internal: Alpha  
External: High-gloss lacquered
  - C. Internal: Mat lacquered  
External: Mat lacquered
  - D. Internal: High-gloss lacquered  
External: High-gloss lacquered
  - E. Internal: Open pore oak  
External: Open pore oak
  - F. Internal: Aged oak  
External: Aged oak
  - G. Internal: Metal lacquered  
External: Metal lacquered
  - H. Internal: Aged oak  
External: Glass door

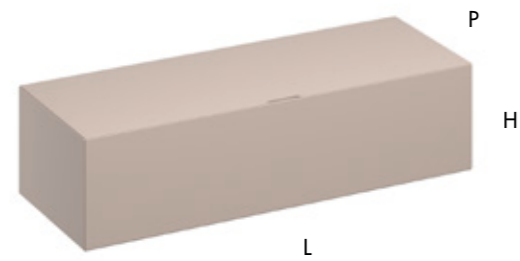
- FR**
- A. Interne: Alpha  
Externe: Laqué mat
  - B. Interne: Alpha  
Externe: Laqué brillant
  - C. Interne: Laqué mat  
Externe: Laqué mat
  - D. Interne: Laqué brillant  
Externe: Laqué brillant
  - E. Interne: Chêne pore ouvert  
Externe: Chêne pore ouvert
  - F. Interne: Chêne brossé  
Externe: Chêne brossé
  - G. Interne: Laqué metal  
Externe: Laqué métal
  - H. Interne: Chêne brossé  
Externe: Porte Glass

- ES**
- A. Interior: Alpha  
Exterior: Laca mate
  - B. Interior: Alpha  
Exterior: Laca Brillo
  - C. Interior: Laca mate  
Exterior: Laca mate
  - D. Interior: Laca brillo  
Exterior: Laca brillo
  - E. Interior: Roble veta abierta  
Exterior: Roble veta abierta
  - F. Interior: Roble envejecido  
Exterior: Roble envejecido
  - G. Interior: Laca metal  
Exterior: Laca metal
  - H. Interior: Roble envejecido  
Exterior: Puerta Vidrio



## MODULARITÀ

MODULARITIES / MODULARITÉ / MODULARIDAD



L

H

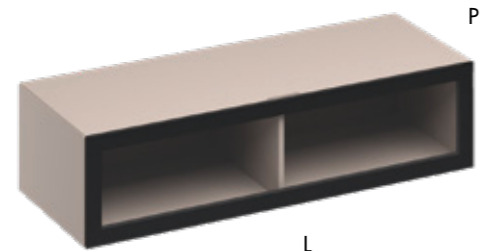
P



L

H

P



L

H

P



L

H

P

### P 36 cm

L	H
32 cm	32 cm
64 cm	32 cm
96 cm	32 cm
128 cm	32 cm
160 cm	32 cm
192 cm	32 cm

L	H
32 cm	32 cm
32 cm	64 cm
64 cm	64 cm
32 cm	96 cm
32 cm	128 cm
32 cm	160 cm
32 cm	192 cm

L	H
128 cm	32 cm
160 cm	32 cm

L	H
64 cm	64 cm
32 cm	128 cm
32 cm	160 cm

### P 46 cm

L	H
32 cm	32 cm
64 cm	32 cm
96 cm	32 cm
128 cm	32 cm
160 cm	32 cm
192 cm	32 cm

L	H
32 cm	32 cm
32 cm	64 cm
64 cm	64 cm
32 cm	96 cm
32 cm	128 cm
32 cm	160 cm
32 cm	192 cm

L	H
128 cm	32 cm
160 cm	32 cm

L	H
64 cm	64 cm
32 cm	128 cm
32 cm	160 cm

## MONTAGGIO

INSTALLATION / MONTAGE / INSTALACIÓN

- IT 1. A terra su piedino da H 1,7  
2. Sospeso  
3. A terra su base Thelma H 12

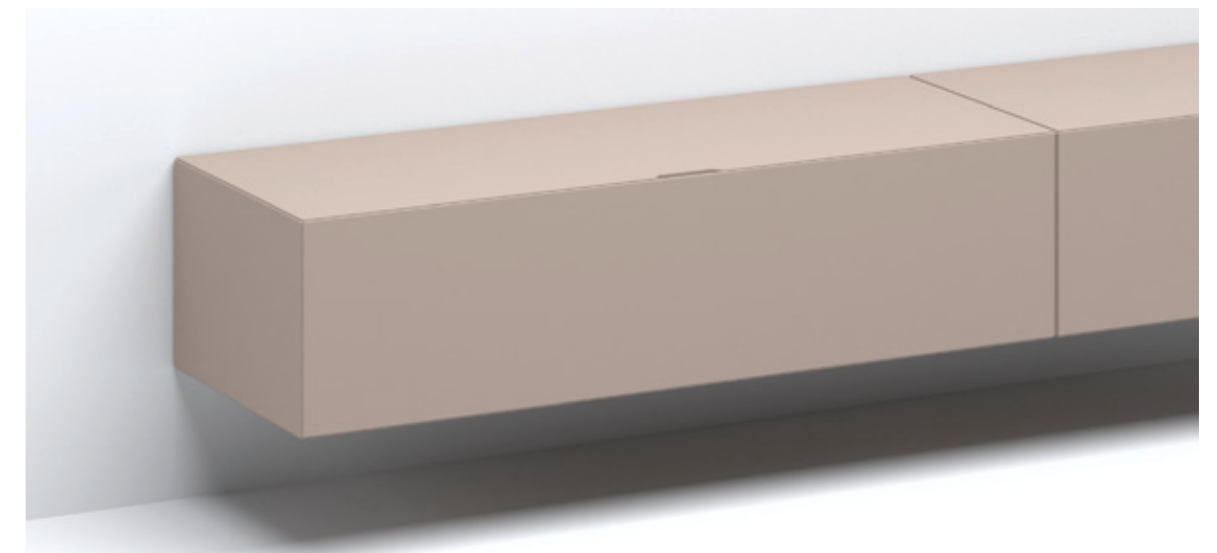
- EN 1. Free-standing on feet H 1,7  
2. Hanging  
3. Free-standing on base Thelma H 12

- FR 1. Au sol sur pieds H 1,7  
2. Suspendu  
3. Au sol sur base Thelma H 12

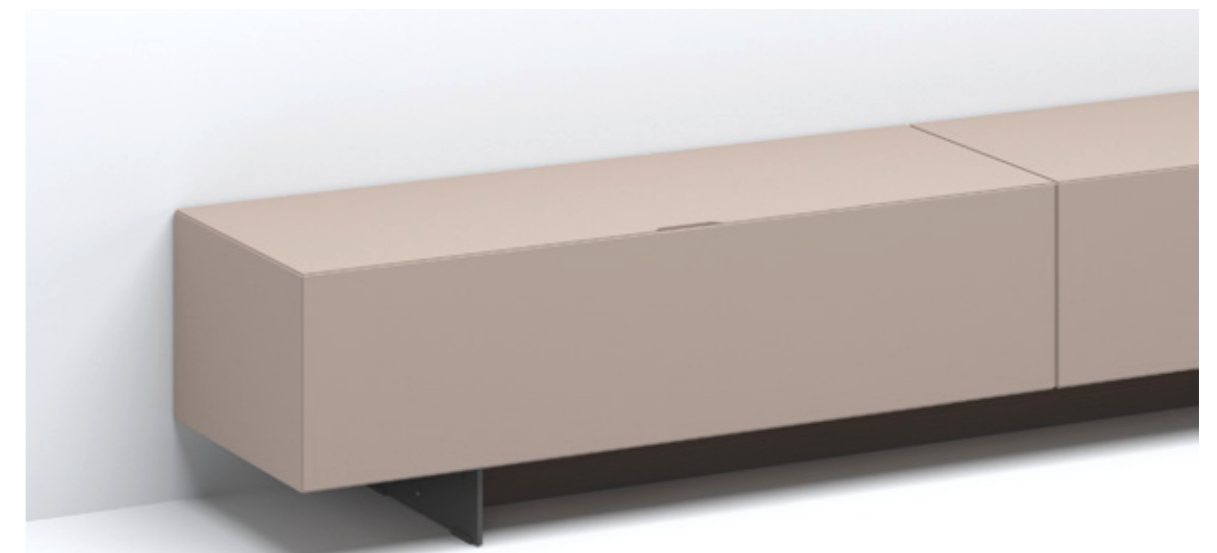
- ES 1. Al piso con patas de H 1,7  
2. Suspendida  
3. Al piso con base Thelma H 12



1



2



3



## APERTURE

OPENING TYPE / OUVERTURE / ABERTURAS

- IT 1. A giorno  
2. Cassetto  
3. Ribalta  
4. Vasistas

- EN 1. Open  
2. Drawer  
3. Flap-down  
4. Flap-up

- FR 1. A jour  
2. Tiroir  
3. Rabattant en bas  
4. Rabattant en haut

- ES 1. Abierto  
2. Cajon  
3. Para abajo  
4. Por arriba



1



2



3



4

## MANIGLIE

HANDLES / POIGNEES / TIRADORES

- IT 1. Sopra  
2. Sotto  
3. Laterale sinistra  
4. Laterale destra

- EN 1. Above  
2. Below  
3. Lhs opening  
4. Rhs opening

- FR 1. En haut  
2. En bas  
3. Laterale gauche  
4. Laterale droite

- ES 1. Arriba  
2. Abajo  
3. Lateral izquierdo  
4. Lateral derecho



1



2



3



4

# PERSONALIZZAZIONI

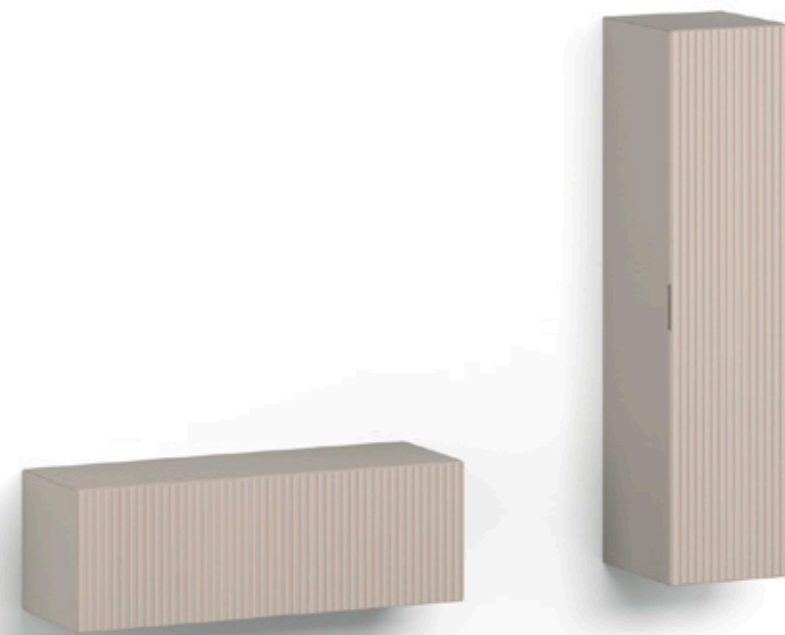
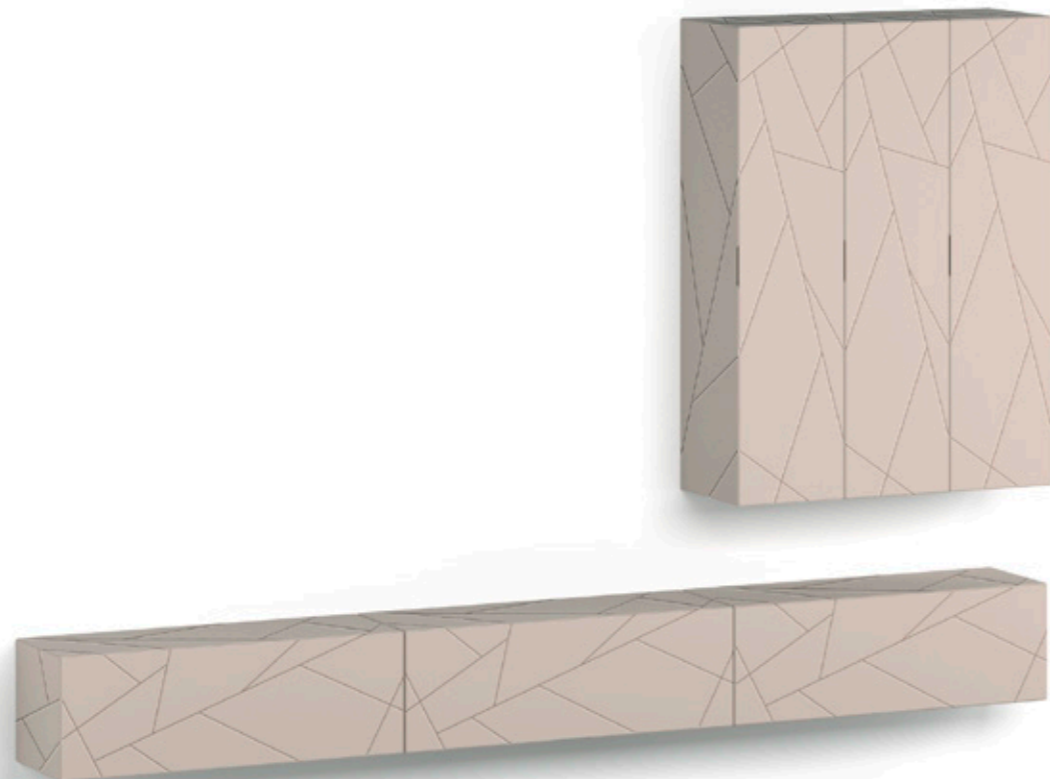
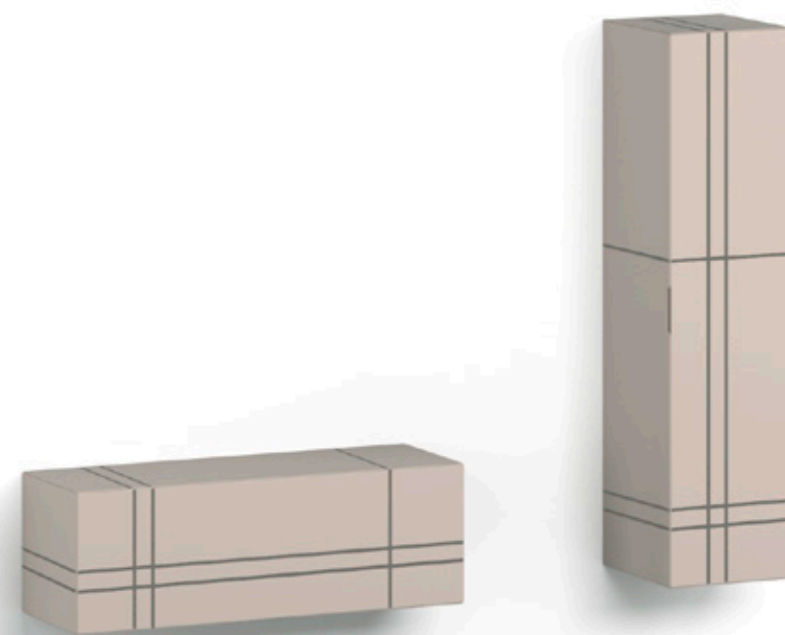
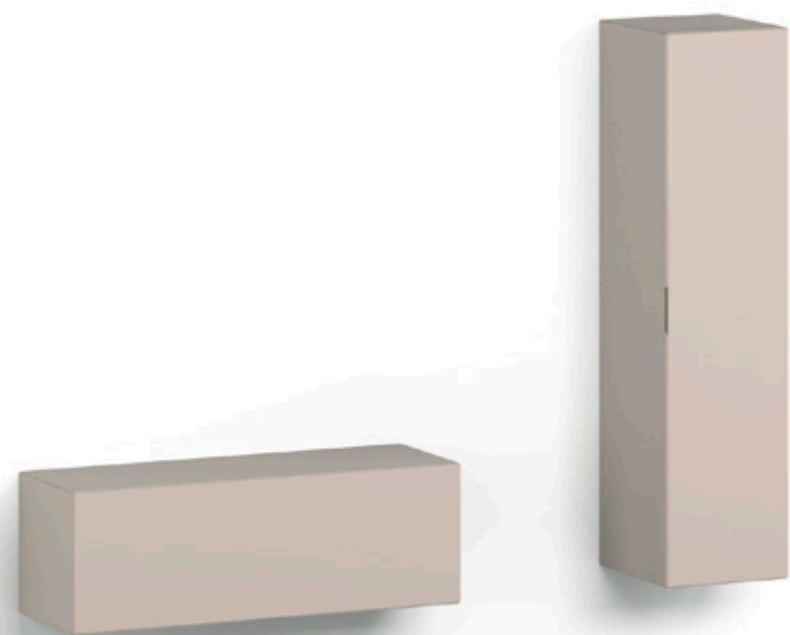
DECORATIONS / DECORATION / PERSONALIZACIONES

- IT 1. Liscio
- 2. Shanghai
- 3. Line
- 4. 10:10

- EN 1. Smooth
- 2. Shanghai
- 3. Line
- 4. 10:10

- FR 1. Lisse
- 2. Shanghai
- 3. Line
- 4. 10:10

- ES 1. Lizo
- 2. Shanghai
- 3. Line
- 4. 10:10





## COLLEZIONI COMPATIBILI

COMPATIBLE COLLECTIONS / COLLECTIONS COMPATIBLES / COLECCIONES COMPATIBLES

IT 1. Boiserie  
2. Movidà

EN 1. Wall panels  
2. Movidà

FR 1. Boiserie  
2. Movidà

ES 1. Boiserie  
2. Movidà



1



2

## INTEGRAZIONE TRA COMPONENTI

COMBINATIONS OF COLLECTIONS / COMBINAISONS DES COLLECTIONS / INTEGRACIONES ENTRE COLECCIONES





## ACCESSORI: ILLUMINAZIONE

ACCESSORIES: LIGHTING / ACCESSOIRES: LUMIERE / ACCESORIOS: ILUMINACIÓN

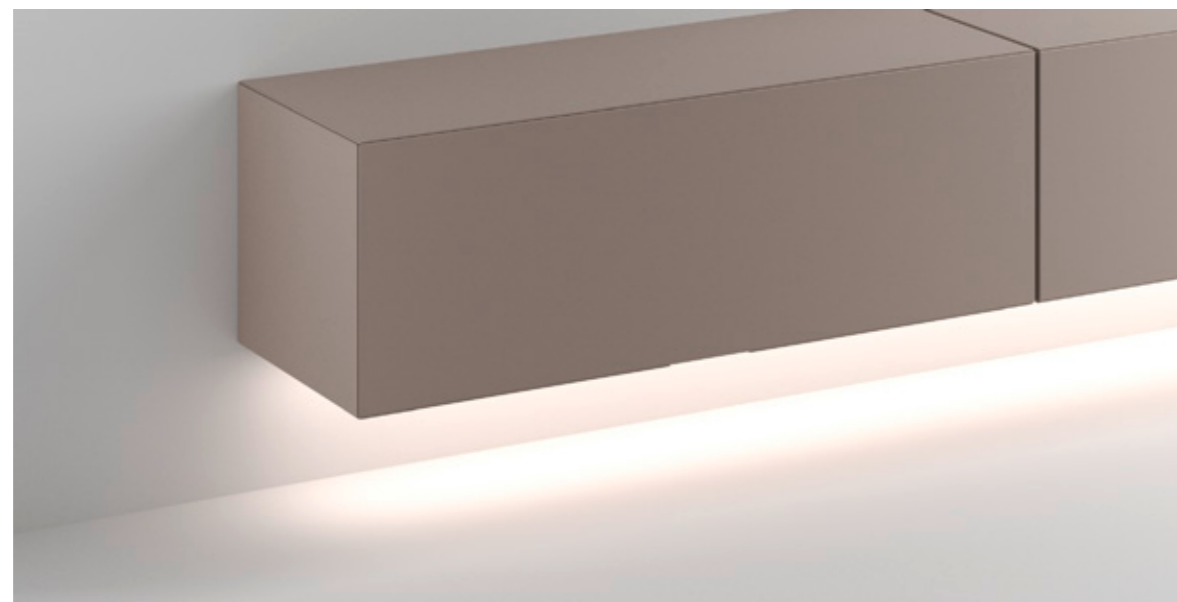
- IT
1. Faretto orientabile
  2. Dettaglio del faretto
  3. Led sotto pensile
  4. Led su cornice
  5. Interruttore touch
  6. Trasformatore



1



2



3

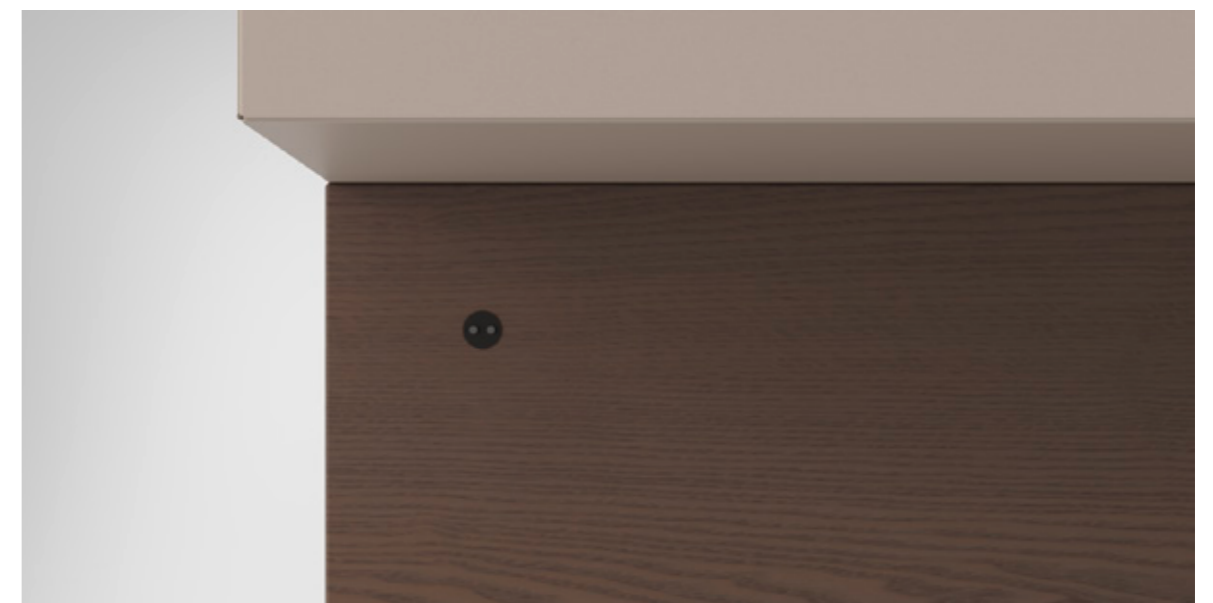
- EN
1. Orientable spot light
  2. Details of the spot light
  3. Led under unit
  4. Led on frame
  5. Touch switch
  6. Transformer

- FR
1. Spot led orientable
  2. Detail du spot orientable
  3. Led en-dessous du meuble
  4. Led sur corniche
  5. Interrupteur touch
  6. Transformateur

- ES
1. Foco basculante
  2. Detalle del foco
  3. Led abajo colgantes
  4. Led en marco
  5. Interruptor touch
  6. Transformador



4



5



6



## ACCESSORI

ACCESSORIES / ACCESSOIRES / ACCESORIOS

- IT
1. Asolatura per passaggio cavi
  2. Sportellino per passaggio cavi
  3. Sportellino con canalina
  4. Tappo passa cavi
  5. Finestratura 46x80 con staffa porta tv
  6. Sensore ripetitore di segnale



1

- EN
1. Cable passage cut
  2. Cable passage door
  3. Cable passage door with plugs
  4. Round cable passage
  5. Cut 46x80 with tvholder
  6. Sensor for signal reception on panel



2



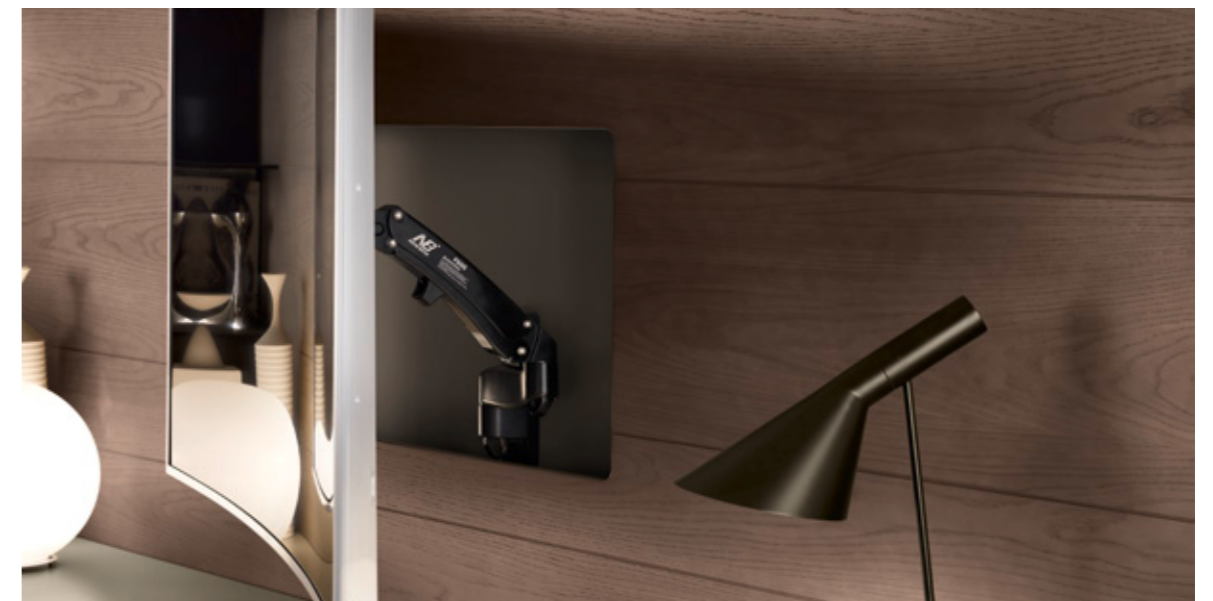
3

- FR
1. Trou passage-cables
  2. Porte passage-cables
  3. Porte passage-cables avec prises
  4. Trou rond pour passage-cables
  5. Fenetre 46x80 avec support tv
  6. Capteur de signal sur boiserie



4

- ES
1. Corte paso cables
  2. Puerta paso de cables
  3. Puerta con ranura
  4. Tapón paso cables
  5. Ventanilla 46x80 con soporte para tv
  6. Sensor repetidor de señales



5



6