

OPEN SPACE

OLIVIERI



OLIVIERI

DRESS CODE

OPEN SPACE



**Open Space,
il sistema Dress Code
integra la colonna cucina**

Open Space,
the Dress Code system
integrates the kitchen module

OPEN SPACE

Concept

Con Open Space il progetto Dress Code è senza confini

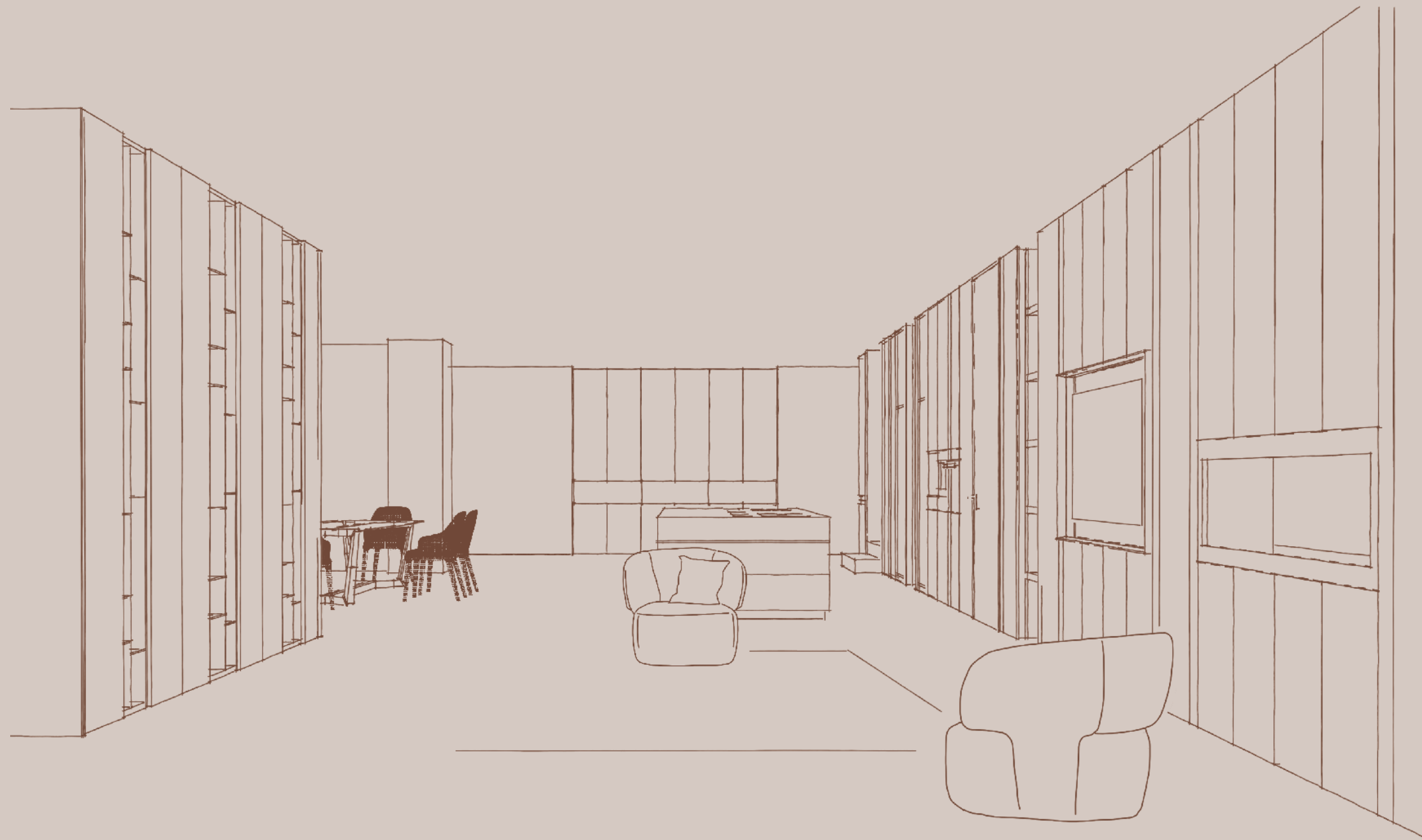
With Open Space
the Dress Code project is limitless

IT

Open Space è l'ultimo tassello che completa Dress Code, ora sistema per progettare una casa completa. Altezza al millimetro, finiture coordinate e integrazione delle porte d'arredo sono i principali punti di forza.

EN

Open Space is the last dowel that completes Dress Code, now it's a system to design an entire house. Height to the millimetre, coordinated finishes and integration of the internal doors are the main strengths.



Integrazione elettrodomestici

Integration of household appliances



Colonna frigo

Refrigerator module



Elettrodomestici a vista

Visible appliances



Elettrodomestici nascosti su terminale

Hidden appliances in a terminal module



Ante rientranti

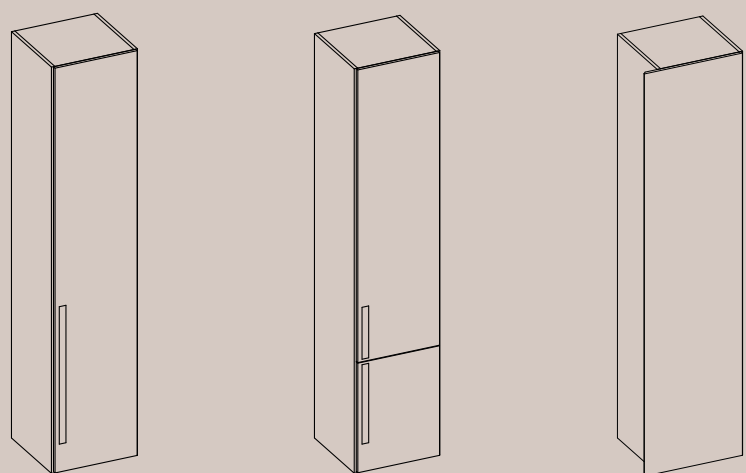
Pocket doors



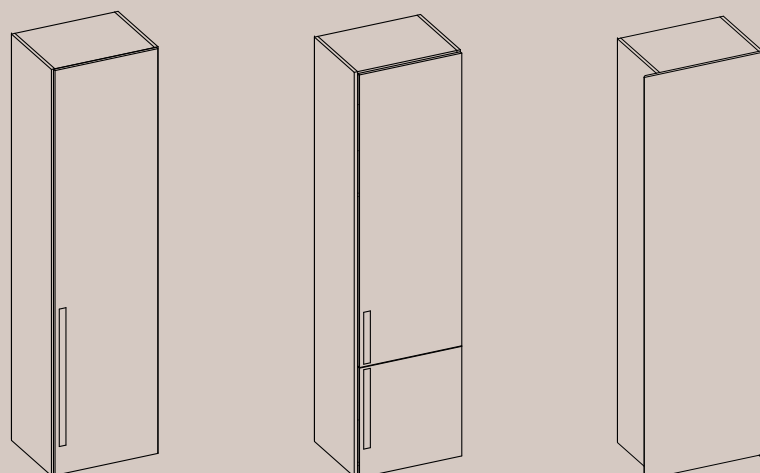
Colonna frigo

Refrigerator module

L 60



L 75

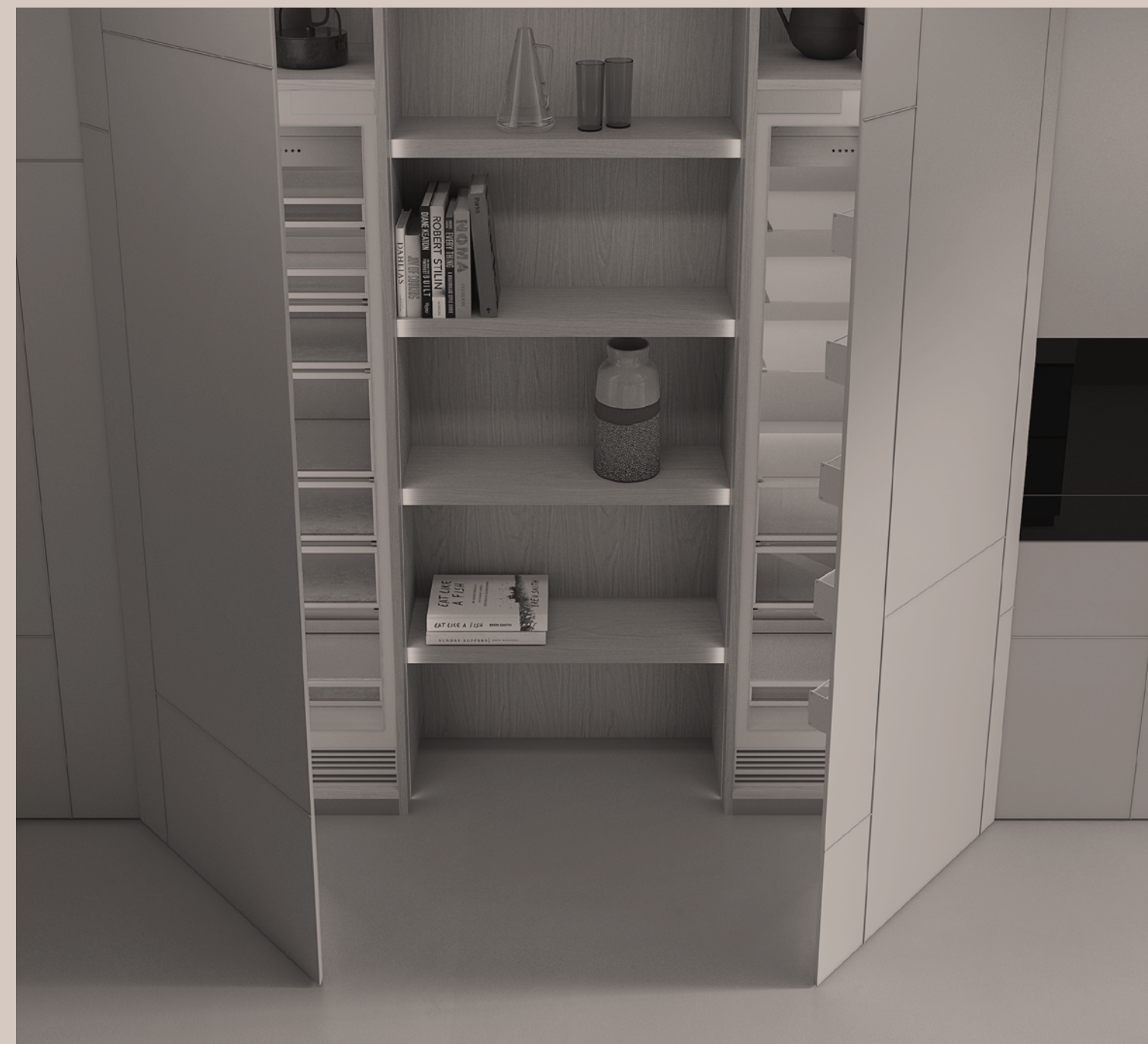


La colonna frigo può contenere l'elettrodomestico larghezza 60 cm o 75 cm.

Sono disponibili 3 diversi sistemi di apertura:
anta a tutta altezza, anta spezzata, anta sporgente.

The refrigerator module can contain the appliance 60 cm or 75 cm wide.

3 different opening systems are available:
full-height door, splitted doors, protruding door.

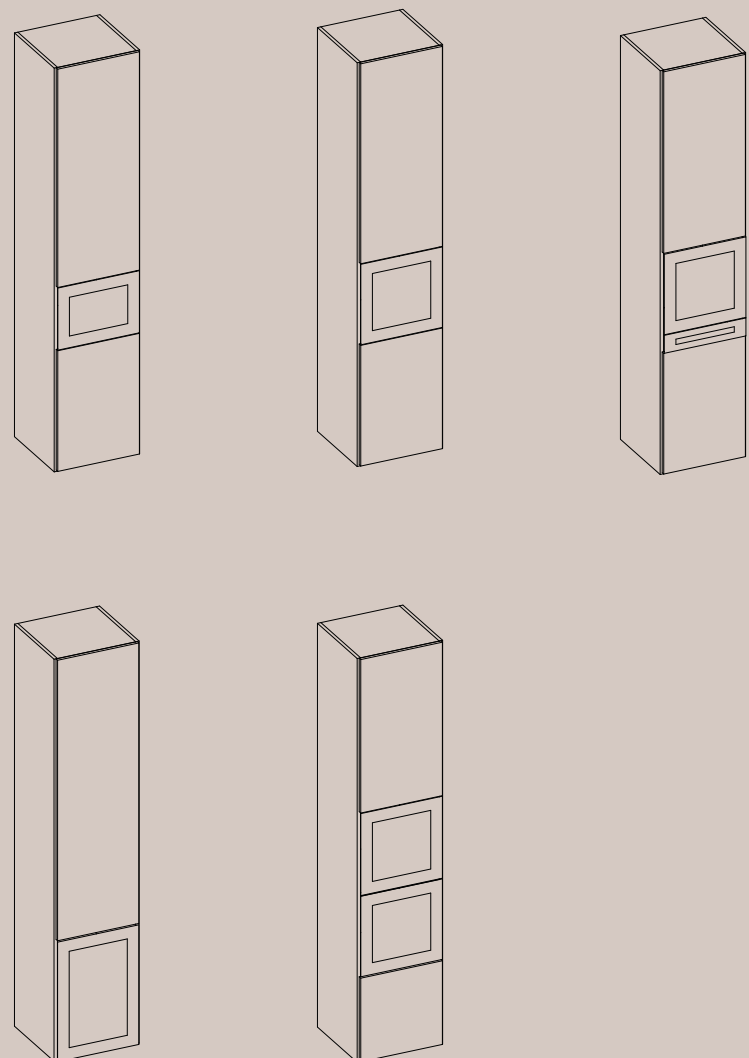


Elettrodomestici a vista

Visible appliances

Colonne per forno,
microonde,
macchina del caffè,
cantina vino

Modules for oven,
microwave,
coffee machine,
wine cellar



Frontalmente alle colonne è possibile integrare tutte le tipologie di elettrodomestici da incasso nelle diverse misure in altezza.

On the front part of the columns, it is possible to integrate all types of built-in appliances in the different height measurements.

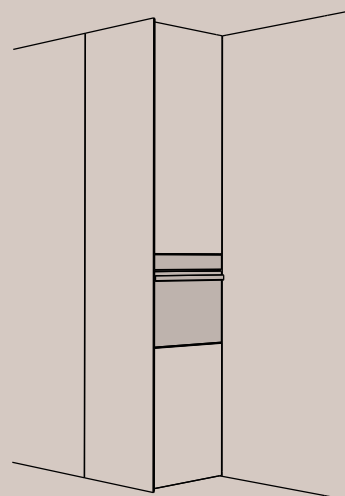


Elettrodomestici nascosti su terminale

Hidden appliances in a terminal module

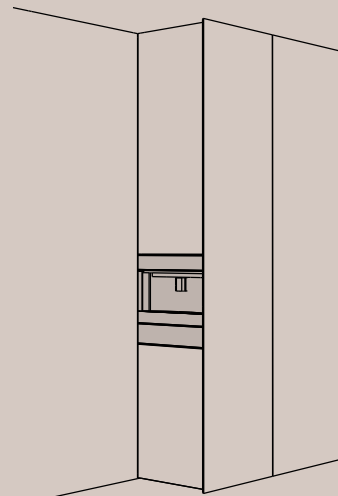
**Colonna terminale
destra**

Right terminal
module



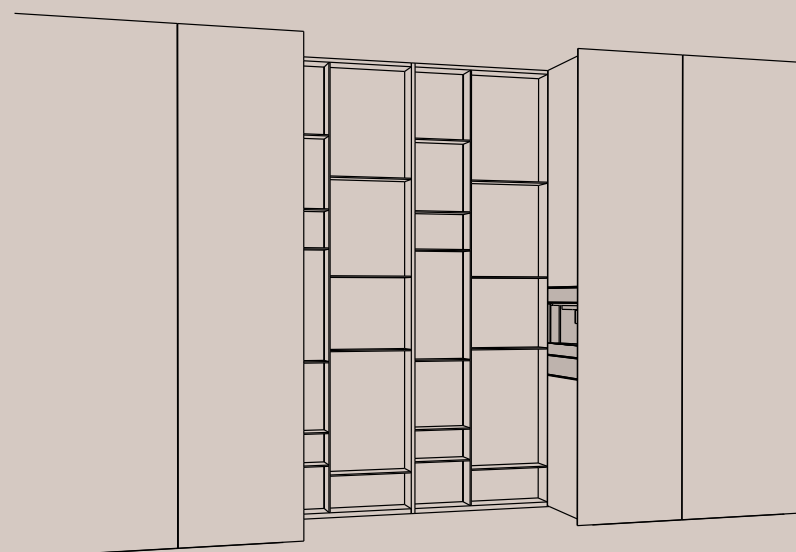
**Colonna terminale
sinistra**

Left terminal
module



**Colonne con
elettrodomestici
nascosti su terminali
destra/sinistra**

Modules with appliances
hidden on right/left terminals



Con Open Space gli elettrodomestici possono essere integrati anche lateralmente alle colonne, sfruttando le apposite colonne terminali.

Tra 2 terminali è possibile inserire anche il modulo libreria Slim a profondità ridotta.

With Open Space, household appliances can also be integrated laterally to the columns, using the appropriate end columns.

Between 2 terminals it is also possible to insert the Slim bookcase module with reduced depth.

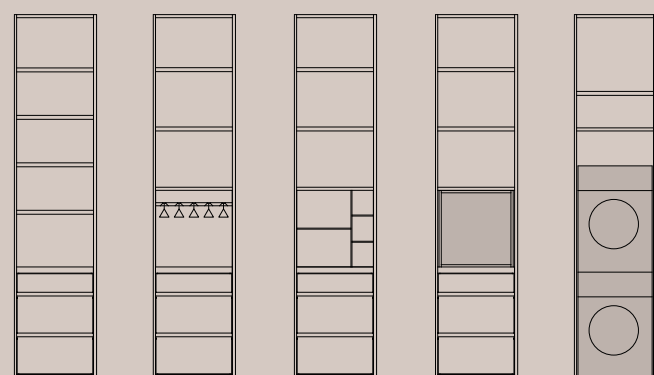


Ante rientranti

Pocket doors

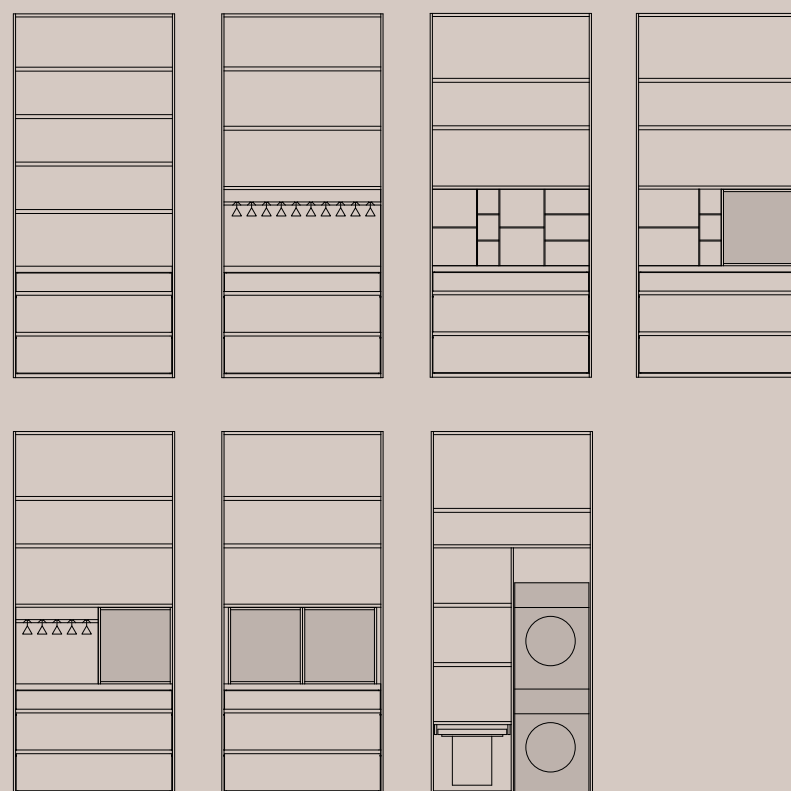
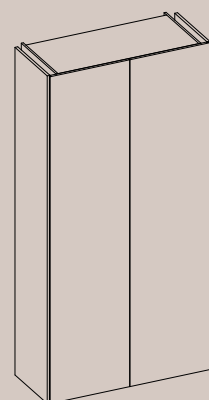
Colonna con ante rientrante singola

Column with single retractable door



Colonna con ante rientranti doppie

Column with double retractable doors



Il progetto Open Space si arricchisce delle esclusive ante rientranti. Nella versione singola e doppia possono integrare gli elettrodomestici o vari accessori.

The Open Space project is enriched with exclusive retractable doors. In the single and double versions you can integrate household appliances or various accessories.



DRESS CODE

OPEN SPACE

Projects

Tre linee ispirative interpretano tre progetti living Open Space in tre differenti mood e aree di gusto

Three inspirational guidelines contemplate three Open Space living projects in three different moods and areas of taste

OPEN SPACE

Valley House



Mood Gentleman

Stile rigoroso e cura del dettaglio sono le principali caratteristiche del Gentleman.

Rigorous style and attention to detail are the main characteristics of the Gentleman.

OPEN SPACE

City Penthouse



Mood Family

Clima familiare e toni caldi sono le principali caratteristiche di questo stile borghese.

A family atmosphere and warm tones are the main characteristics of this bourgeois style.

OPEN SPACE

Desert Villa



Mood Romantic

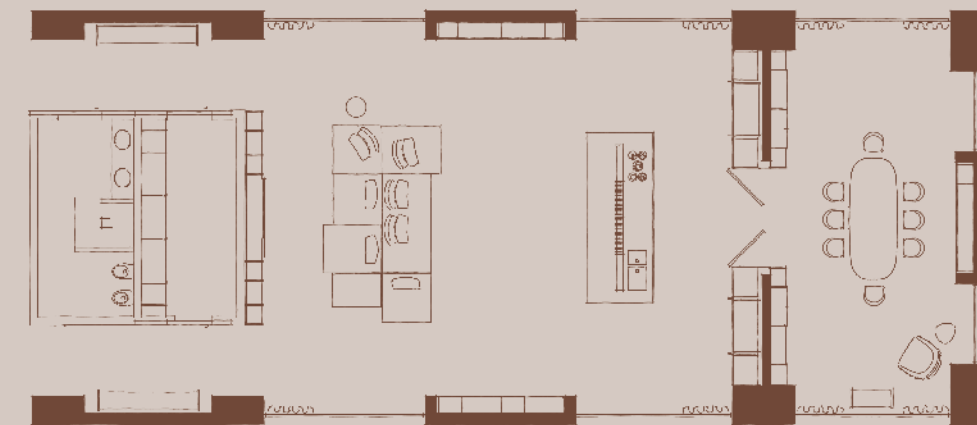
Stile romantico, toni chiari e illuminazione naturale sono le caratteristiche principali di questa villa.

Romantic style, light tones and natural lighting are the main features of this villa.



OPEN SPACE

Valley House



Uno spazio living aperto ed essenziale
in continuo dialogo con l'ambiente esterno.

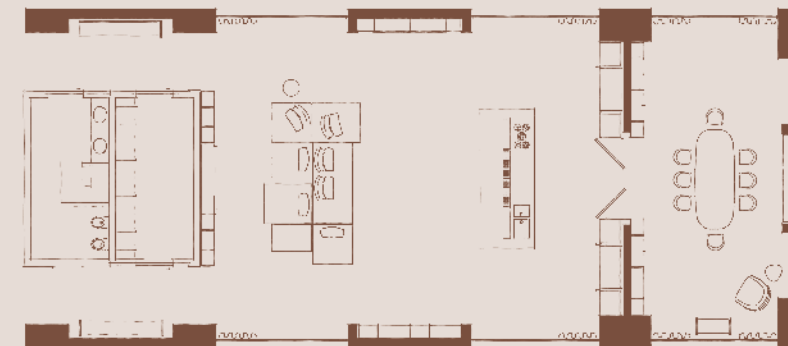
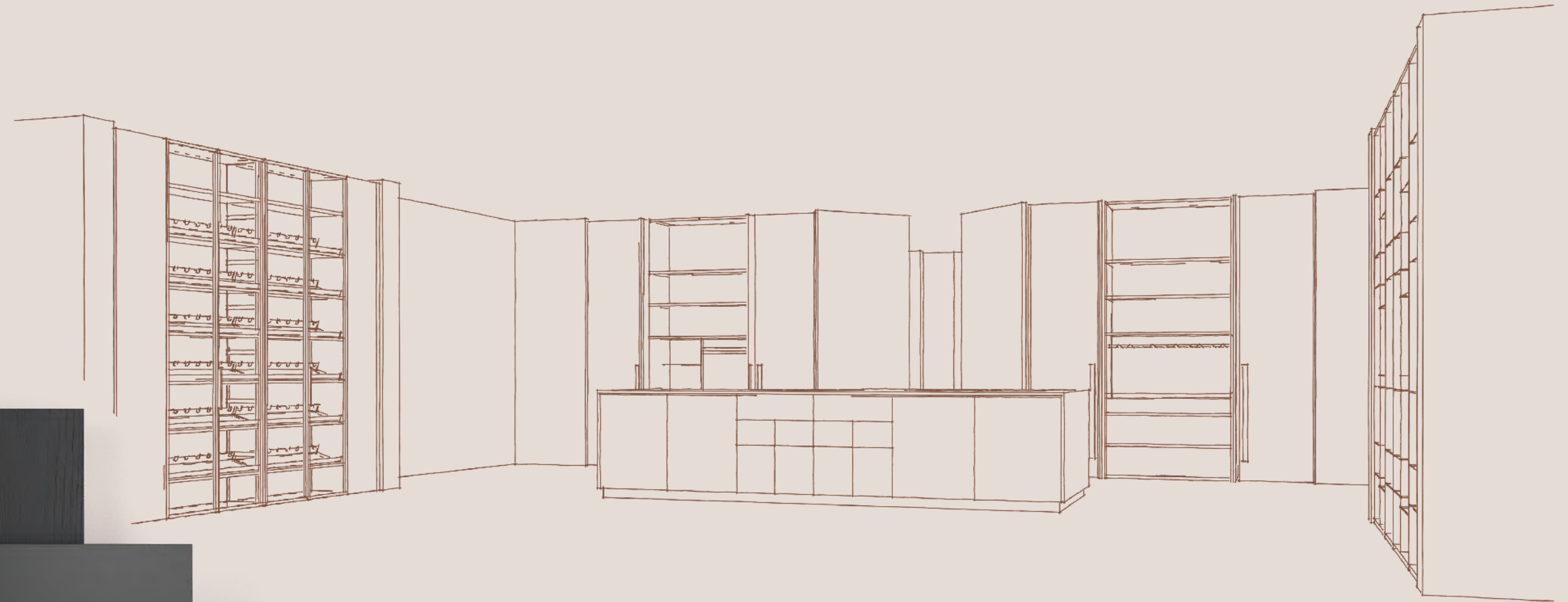
*An open and essential living space
in continuous dialogue with the external environment.*



Colonna cucina Open Space
con ante rientranti in Rovere Tammass Wengè,
interni laccato Antracite opaco;
maniglie INC100 per ante rientranti
in metallo Bronzo.

*Open Space kitchen module with pocket doors
in Tammass Wengè Oak,
matt Antracite lacquered interior;
INC100 handles for retractable doors
in metallic Bronze.*

Valley House



Un'ambiente living con contenimento e funzioni "a scomparsa", per un concept estremo ed essenziale.

A living room with storage and "retractable" functions, for an extreme and essential concept





Ante in Rovere Tammagè; interni laccato Antracite opaco; maniglie INC100 per ante rientranti in metallico Bronzo.

Doors in Tammagè Oak; matt Antracite lacquered interior; INC100 handles for retractable doors in Bronze metal.





La cassettera Open Space disponibile solo su colonne con ante rientranti, può contenere l'accessorio porta posate in rovere Wengè.

The Open Space chest of drawers, available only on modules with retractable doors, can contain the Wengè oak cutlery holder accessory.



Doppia porta Pivot in Rovere Tammass Wengè.

Double Pivot door in Tammass Wengè Oak.

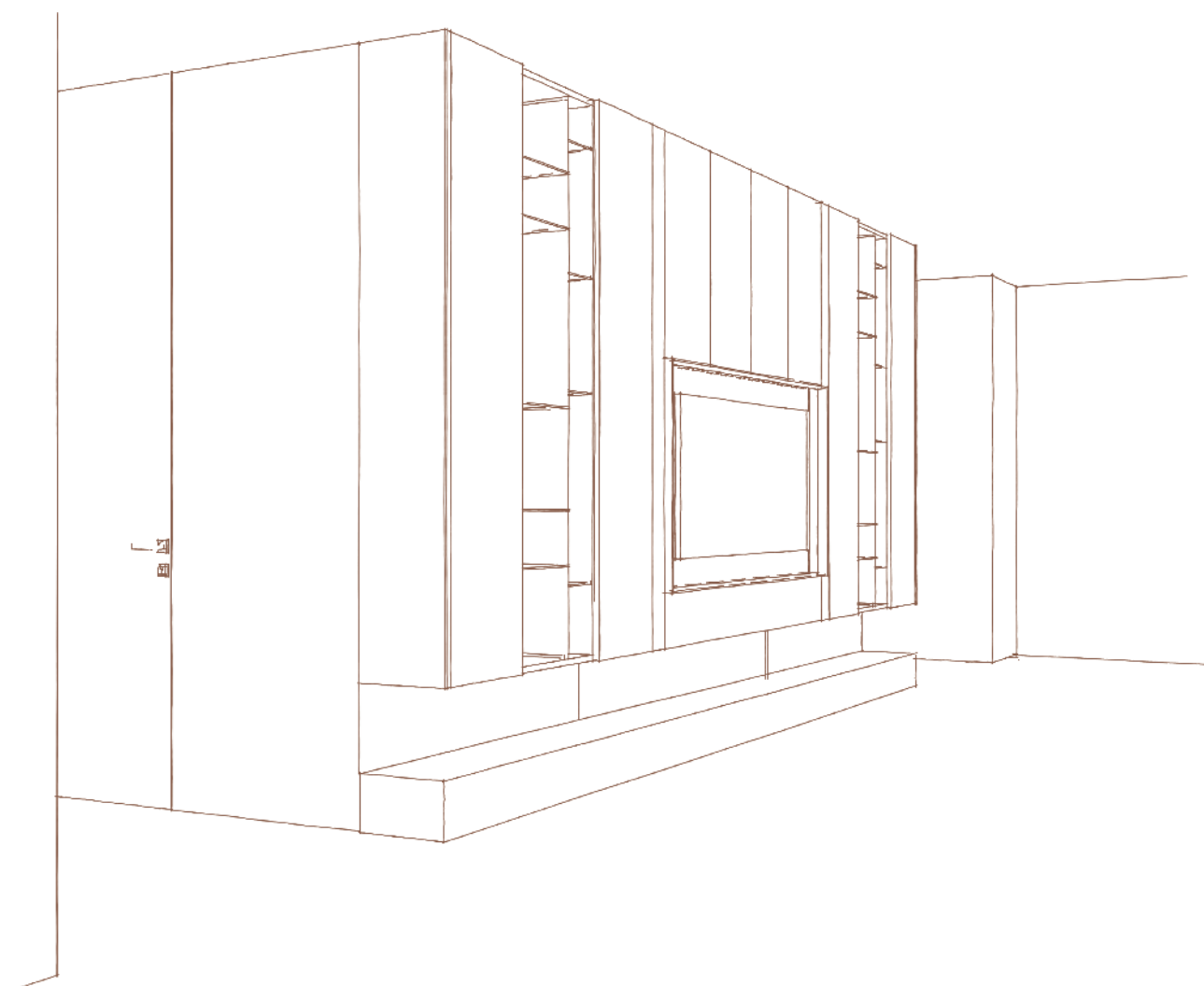




Dress Code con anta vetro trasparente ed accessori in Rovere Wengè. Nel dettaglio il tavolo Mr. Big e la sedia Adam.

Dress Code with transparent glass door and accessories in Wenge Oak. In detail the Mr. Big table and the Adam chair.





Dress Code Air in laccato Antracite 80:40
con box TV e modulo Slim in rovere Wengè.

Dress Code Air in Antracite Lacquer 80:40
with TV box and Slim module in Wengè oak.





Madia Cosmo in laccato Oceano lucido con Led inferiori e posteriori; boiserie in Rovere Tammis Wengè.

Cosmo sideboard in glossy Oceano lacquer with lower and rear LEDs; boiserie in Tammis Wengè Oak.



Modulo Slim in rovere Wengè con luce Led verticale arretrata.

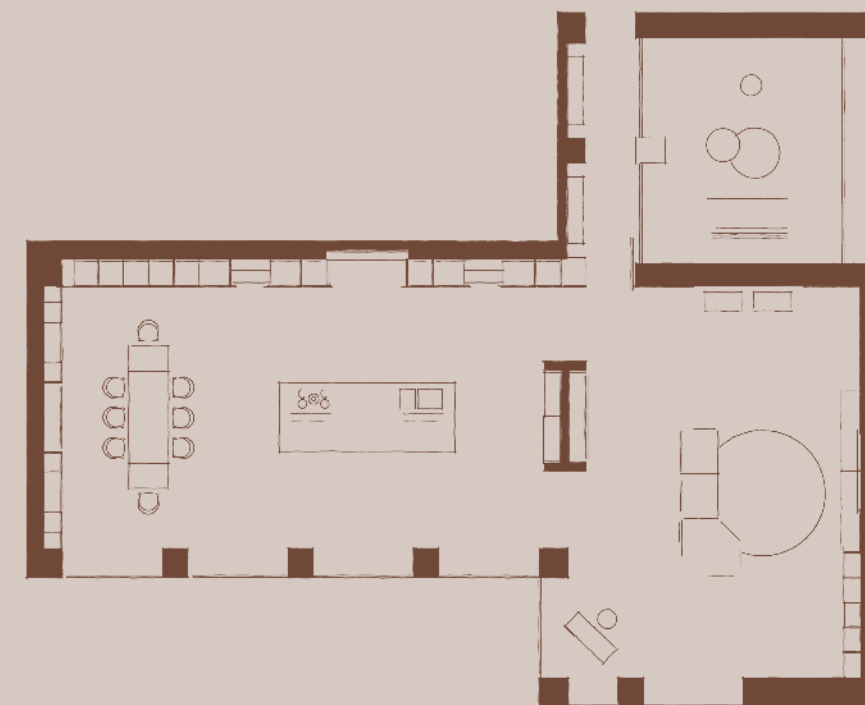
Slim module in Wengè oak with recessed vertical LED light.





OPEN SPACE

City Penthouse



Caldo e accogliente,
un punto di vista esclusivo sulla metropoli.

*Warm and welcoming,
an exclusive location on the metropolis.*



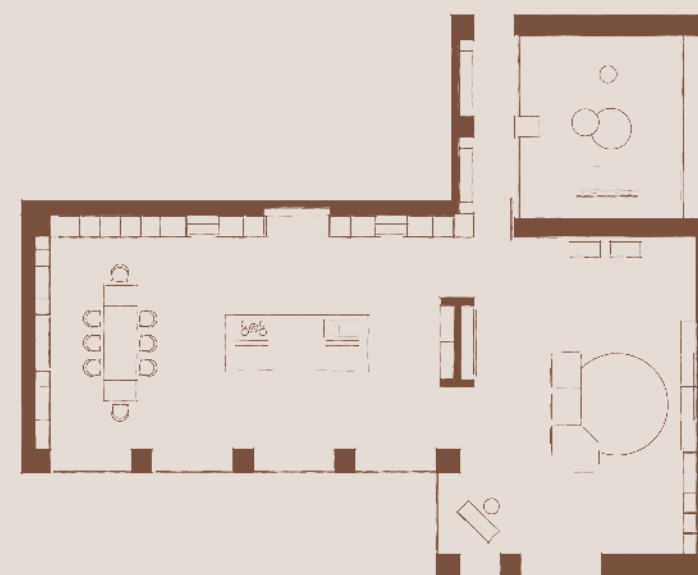
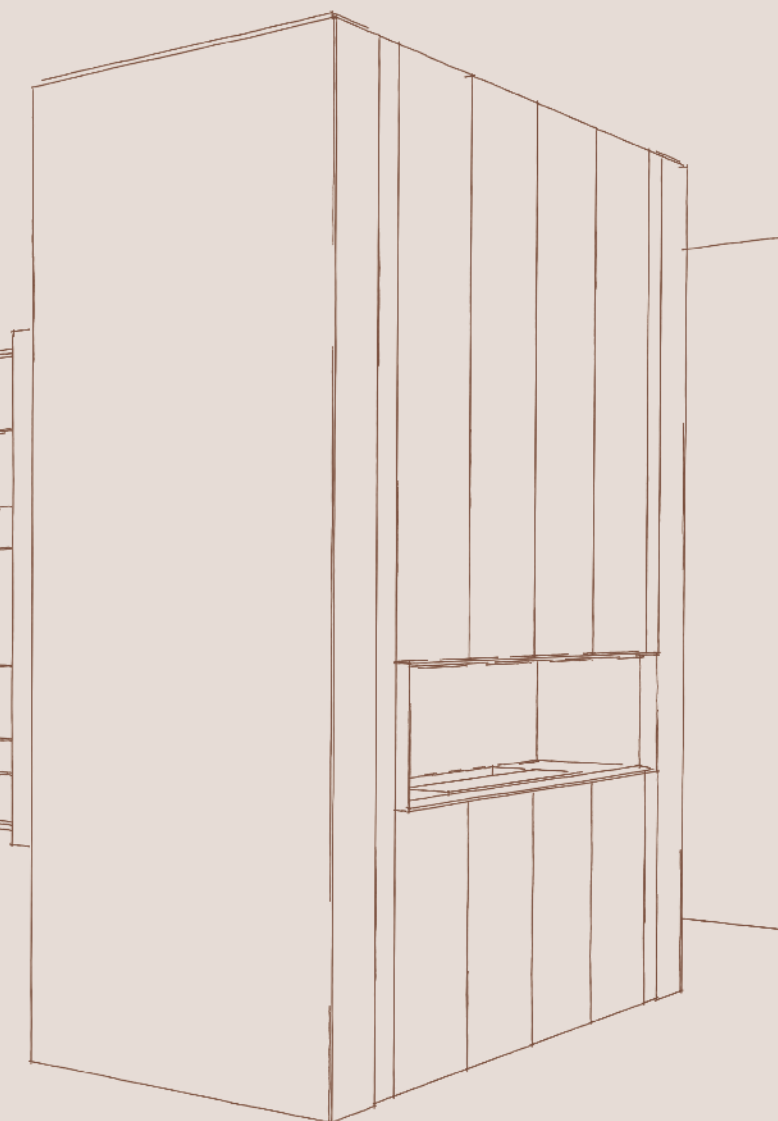
OPEN SPACE



Dress Code Open Space
con colonna cucina ed
elettrodomestici nascosti su
terminale.

Open Space Dress Code
with kitchen module and
hidden appliances on
terminal.

City Penthouse



Toni caldi ed eleganti per un'atmosfera riservata e rilassante.

Warm and elegant tones for a private and relaxing atmosphere.





Colonna Open Space in Rovere Moka 10:2;
modulo Slim in laccato Nocciola opaco.

Open Space module in Moka Oak 10:2; Slim
module in matt Nocciola lacquer.



Nel dettaglio a destra, colonna frigo da 75cm con anta sporgente da 87cm in tamburato nella finitura Rovere Moka 10:2.

In detail on the right, 75cm refrigerator module with 87cm protruding door in honeycomb in the 10:2 Moka Oak finish.







Colonna cucina con elettrodomestico cantina integrato frontalmente. Nel dettaglio tavolo Ambrogio e sedia Adam.

Kitchen module with cellar appliance integrated at the front. In detail, Ambrogio table and Adam chair.



Nel dettaglio la vineria Dress Code con accessorio porta bottiglie.

In detail, the Dress Code winery with bottle holder accessory.



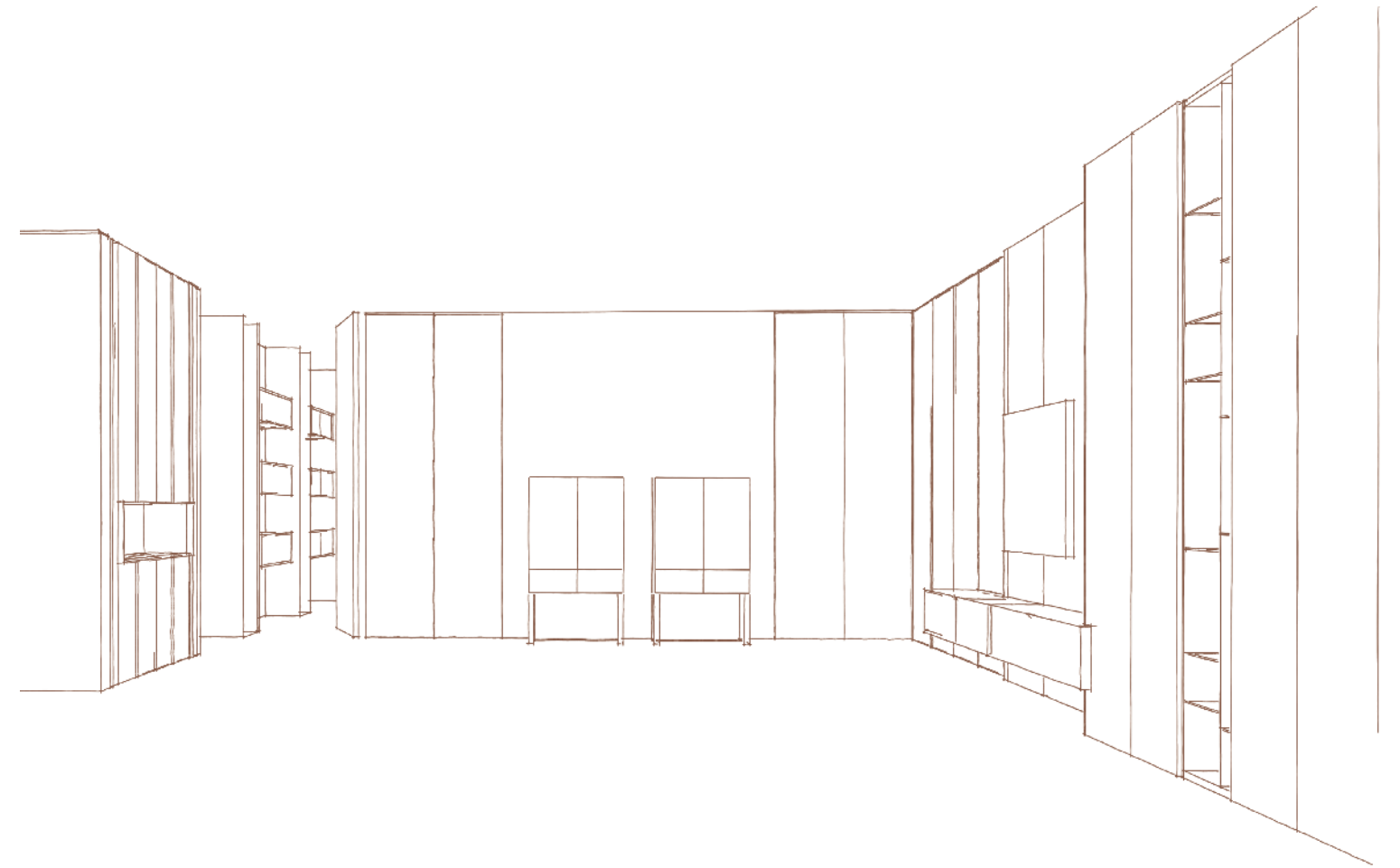
Dress code con ante Glass in vetro trasparente e telaio metallico Ottone. Interni in DC Dark con accessorio porta bottiglie.

Dress code with transparent glass doors and Ottone metal frame. DC Dark interior with bottle holder accessory.









Dress Code living con Cube6 integrato. Ante in laccato Nocciola 10:10, boiserie e modulo Slim in Rovere Moka.

Living Dress Code with integrated Cube6. Doors in 10:10 Nocciola lacquer, boiserie and Slim module in Moka Oak.



Madie Aqua 90 in Nocciola 10:10 e basamento in metallico Ottone.

Aqua 90 sideboards in Nocciola 10:10 and base in metallic Ottone.



A sinistra porta Pivot in Rovere Moka.
A destra Dress Code con box a giorno in laccato
metallico Ottone e camino a vapore integrato.

On the left, the Pivot door in Moka Oak.
On the right, Dress Code with open box in Ottone
metallic lacquer and integrated vapor fireplace.



Cube6 in laccato nocciola opaco con retroilluminazione Ring. Boiserie in Rovere Moka 10:2.

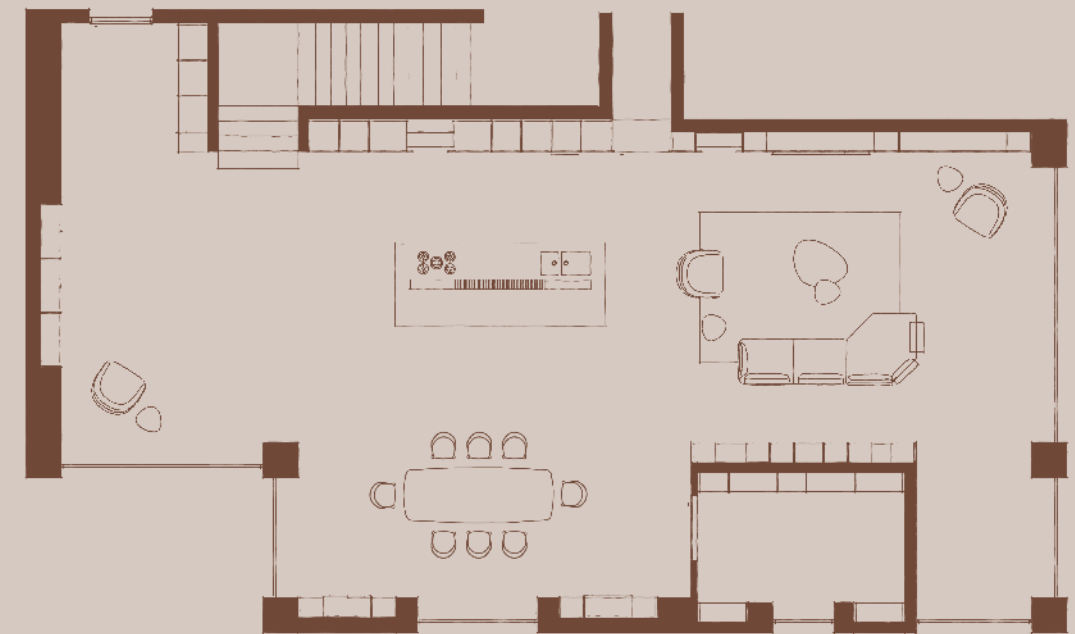
Cube6 in matt Nocciola lacquer with Ring backlighting. Boiserie in Moka Oak 10:2.





OPEN SPACE

Desert Villa



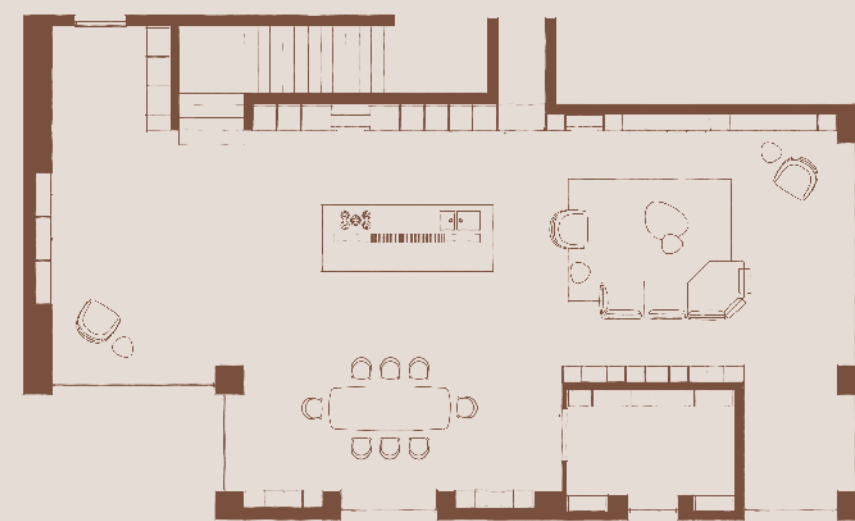
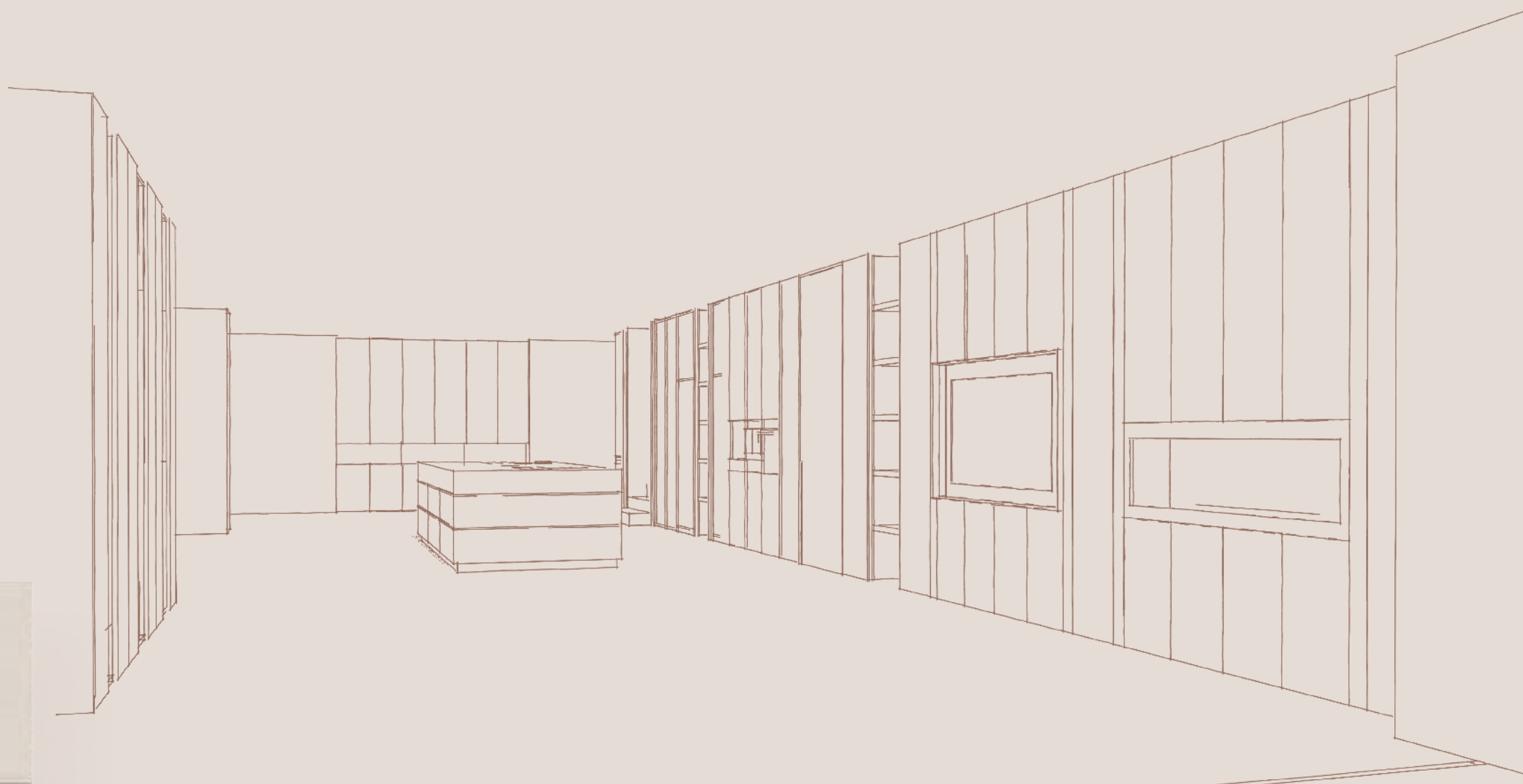
Un'isola nell'isola:
il rifugio naturale per la mente.

*An island within an island:
the natural shelter for the mind.*





Desert Villa



Living Open Space con zona TV, colonna cucina e porta integrata in laccato Lino opaco con inserto 2:2 e box TV e mensole in Rovere Light.

Open Space living room with TV area, kitchen module and integrated door in matt Lino lacquer with 2:2 insert and TV box and shelves in Light Oak.



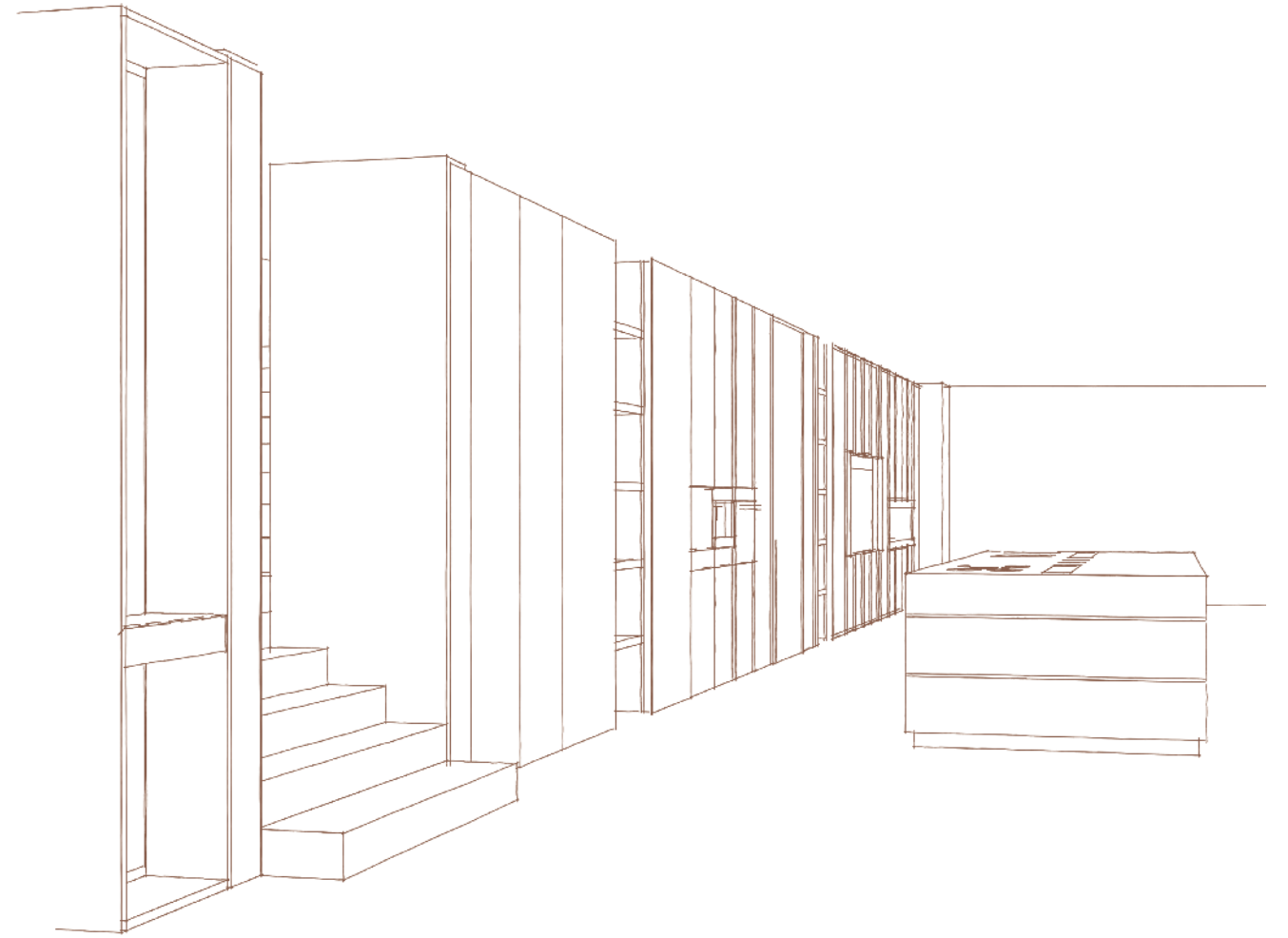


A sinistra dettaglio inserto metallico 2:2 Lino su anta Lino opaco..

On the left, detail of the 2:2 Lino metal insert on the matt Lino door.







A sinistra colonne frigo/freezer L 75 cm con anta sporgente da 87cm e mensole sp. 5 cm in Rovere Light.

On the left, fridge/freezer columns W 75 cm with 87cm protruding door and shelves th. 5 cm in Light Oak.





Dettaglio del cassetto del terminale a specchio in Rovere Light.

Detail of the mirror terminal drawer in Light Oak.

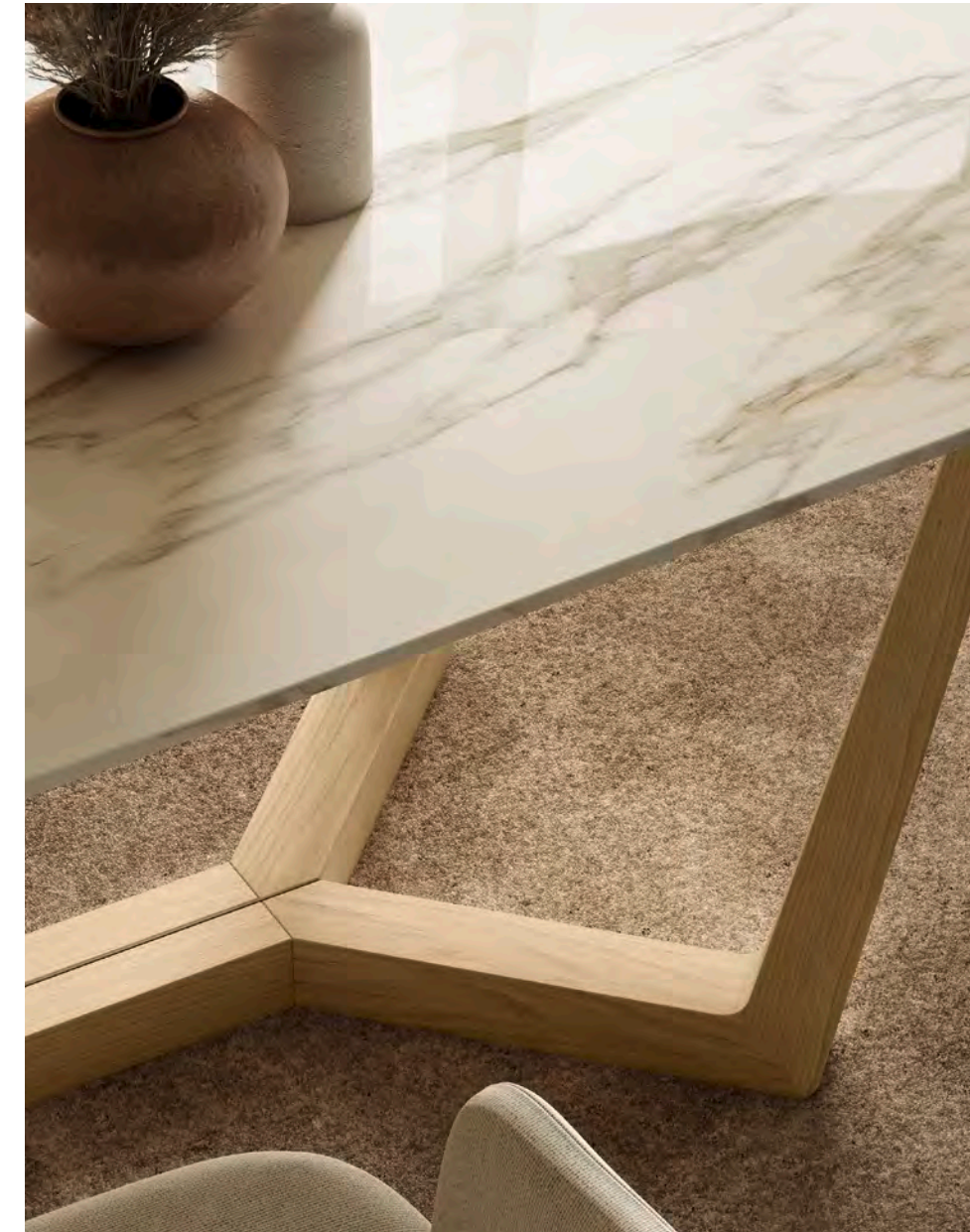




Composizione Dress Code Air con madia Dress Code in basso. Nicchia in laccato metallico Champagne.

Dress code Air Composition with Dress Code sideboard below. Niche in Champagne metallic lacquer.





Tavolo Hector con base in Rovere Light e top in Gress Calacatta "special edition Florim".

Hector table with base in Light Oak and top in Calacatta stoneware "Florim special edition".



Dress Code con ante in Rovere Light 10:2 e modulo Slim in laccato Lino opaco.

Dress Code with doors in Light Oak 10:2 and Slim module in matt Lino lacquer.



Project

MICHELE SARTINI

Project Assistant

ALESSIA TACCONI

Art Direction

LUALDI MERALDI STUDIO

Graphic Design

OFFICINE BONFIGLIOLI

3D Rendering

ARCHÈ AGENCY

Fotolito

LIFEINPIXEL

Stampa

LA PIEVE POLIGRAFICA

